

NEW & IMPROVED!
UNDERBAR SOLUTIONS



FOODSERVICE EQUIPMENT

RETAILERS GUIDE - NO PRICE



PRODUCT SUBJECT TO ITEM AVAILABILITY
NO MODIFICATIONS TO FLYER PRODUCTS AT FLYER PRICING



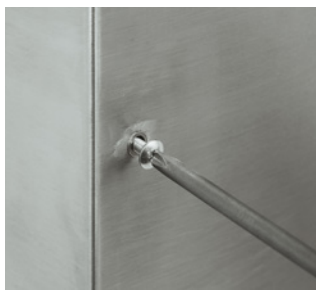
NEW & IMPROVED UNDERBAR EQUIPMENT

Engineered With Functionality In Mind

John Boos' newly designed underbar equipment is engineered to improve quality, ease of installation, and efficiency within the foodservice industry. The 18GA type 300 stainless steel construction provides durability and features new design elements such as a uniform 1-1/4" wide backsplash, removable mounting faucet plate, preinstalled threaded inserts for speed rails, and much more. Every piece of equipment comes standard with stainless steel legs, bracing and adjustable bullet feet. Available in our standard 21" wide or 18" slim-line widths to fit your specific project. Contact our team of experts for a one-on-one discussion on how we can help quote your next project.



18GA TYPE 300 STAINLESS
STEEL CONSTRUCTION



PREINSTALLED
THREADED INSERTS



1-1/4" WIDE BACKSPLASH



STAINLESS STEEL LEGS,
BRACING & ADJ BULLET FEET

NEW DESIGN FEATURES

Each piece of our new underbar equipment is uniquely designed to have a simplistic and efficient functionality. Throughout each product you will see the enhanced features that makes our products your preferred choice for new underbar equipment. (Note: Each product includes unique design features that might not be listed below. Call and speak to one of our specialists for more information.)



REMOVABLE MOUNTING FAUCET PLATE

Allows for an ease of installation for all faucet and plumbing work.



REMOVABLE SODA LINE ACCESS PLATE

Easily run soda lines through the backsplash of your ice bins.



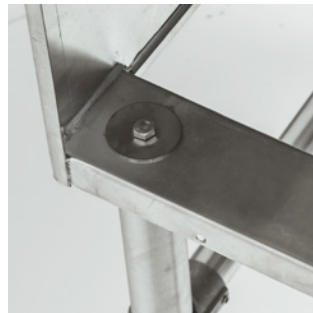
PREDRILLED ATTACHMENT HOLES

Securely attaches adjacent equipment together for a uniform underbar area.



PREINSTALLED THREADED INSERTS

Easy and secure installation for additional accessories such as speed rails, etc.



CHANNEL MOUNTED LEGS

Removable legs provide additional space to easily clean underneath the equipment.



NEW PRODUCTS / UNDERBAR EQUIPMENT

FWFSF1022

UNDERBAR COMPARTMENT SINKS NSF

NEW

- 18GA 300 Series Stainless Steel
- 10"X14"X10" Deep Bowls With Corner Drains (Show Photo)
- 4" O.C. Splash Faucet Holes With Removable Mounting Faucet Plate
- Bowls Are Fabricated, Not Deep Drawn
- Drain Board With Removable Perforated Insert
- Raised Marine Edge On Front And Sides
- Channel Mounted Stainless Steel Legs & Bracing w/Adj. Bullet Feet
- Includes Pre-Drilled Attachment Holes To Securely Attach Adjacent Equipment Together For A Uniform Underbar Area
- Includes "Z" Clips For Optional Wall Mounting/Securing
- Includes Overflow Stand Pipes (PB-OVF-BS)



CORNER DRAINS



UBS3-1860-2D12-X

* Requires Shallow Splash Mount Faucet (Sold Separately)

* Flexible Water Line Connectors Recommended With Shallow Mount Faucets (Sold Separately)

SLIM-LINE - 18" WIDTH

3 COMPARTMENT	BOWL SIZE (L X W X D)	DRAIN BOARD SIZE	OVERALL (L X W)	ECONOMY FAUCET	HEAVY DUTY FAUCET
UBS3-1836-X	3 - 10"x14"x10"	NONE	36"x18"		
UBS3-1860-2D12-X	3 - 10"x14"x10"	(2) - 12" (LH & RH)	60"x18"	PBF-W2-10LF-X (Sold Separately)	PBF-4SM2-10LF-X (Sold Separately)
UBS3-1872-2D18-X	3 - 10"x14"x10"	(2) - 18" (LH & RH)	72"x18"		
UBS3-1884-2D24-X	3 - 10"x14"x10"	(2) - 24" (LH & RH)	84"x18"		

4 COMPARTMENT	BOWL SIZE (L X W X D)	DRAIN BOARD SIZE	OVERALL (L X W)	ECONOMY FAUCET	HEAVY DUTY FAUCET
UBS4-1848-X	4 - 10"x14"x10"	NONE	48"x18"		
UBS4-1872-2D12-X	4 - 10"x14"x10"	(2) - 12" (LH & RH)	72"x18"	PBF-W2-10LF-X (Sold Separately)	PBF-4SM2-10LF-X (Sold Separately)
UBS4-1884-2D18-X	4 - 10"x14"x10"	(2) - 18" (LH & RH)	84"x18"		
UBS4-1896-2D24-X	4 - 10"x14"x10"	(2) - 24" (LH & RH)	96"x18"		

STANDARD - 21" WIDTH

3 COMPARTMENT	BOWL SIZE (L X W X D)	DRAIN BOARD SIZE	OVERALL (L X W)	ECONOMY FAUCET	HEAVY DUTY FAUCET
UBS3-2136-X	3 - 10"x14"x10"	NONE	36"x21"		
UBS3-2160-2D12-X	3 - 10"x14"x10"	(2) - 12" (LH & RH)	60"x21"	PBF-W2-10LF-X (Sold Separately)	PBF-4SM2-10LF-X (Sold Separately)
UBS3-2172-2D18-X	3 - 10"x14"x10"	(2) - 18" (LH & RH)	72"x21"		
UBS3-2184-2D24-X	3 - 10"x14"x10"	(2) - 24" (LH & RH)	84"x21"		

4 COMPARTMENT	BOWL SIZE (L X W X D)	DRAIN BOARD SIZE	OVERALL (L X W)	ECONOMY FAUCET	HEAVY DUTY FAUCET
UBS4-2148-X	4 - 10"x14"x10"	NONE	48"x21"		
UBS4-2172-2D12-X	4 - 10"x14"x10"	(2) - 12" (LH & RH)	72"x21"	PBF-W2-10LF-X (Sold Separately)	PBF-4SM2-10LF-X (Sold Separately)
UBS4-2184-2D18-X	4 - 10"x14"x10"	(2) - 18" (LH & RH)	84"x21"		
UBS4-2196-2D24-X	4 - 10"x14"x10"	(2) - 24" (LH & RH)	96"x21"		

UNDERBAR CORNER SINKS NSF

NEW

- 18GA 300 Series Stainless Steel
- LH/RH Bowls: 10"X14"X10", Center Bowl: 14"x14"x10"- Deep Bowls With Corner Drains
- (2) 4" O.C. Splash Mount Faucet Holes With Removable Mounting Faucet Plate
- Bowls Are Fabricated, Not Deep Drawn
- Drain Board With Removable Perforated Insert
- Raised Marine Edge On Front And Sides
- Channel Mounted Stainless Steel Legs & Bracing W/Adj. Bullet Feet
- Includes Pre-Drilled Attachment Holes To Securely Attach Adjacent Equipment Together For A Uniform Underbar Area.
- Includes "Z" Clips For Optional Wall Mounting/Securing
- Includes Overflow Stand Pipes (PB-OVF-BS)



UBS3C-2148-2D18-X

* Requires (2) Shallow Splash Mount Faucets (Sold Separately)

* Flexible Water Line Connectors Recommended With Shallow Mount Faucets (Sold Separately)

SLIM-LINE - 18" WIDTH

3 COMPARTMENT	BOWL SIZE (L X W X D)	DRAIN BOARD SIZE	OVERALL (L X W)	ECONOMY FAUCET	HEAVY DUTY FAUCET
UBS3C-1848-2D18-X	Center - 10"x14"x10" LH & RH - 10"x14"x10"	(2) - 18"	48"x18"	PBF-W2-10LF-X (Sold Separately)	PBF-4SM2-10LF-X (Sold Separately)

STANDARD - 21" WIDTH

3 COMPARTMENT	BOWL SIZE (L X W X D)	DRAIN BOARD SIZE	OVERALL (L X W)	ECONOMY FAUCET	HEAVY DUTY FAUCET
UBS3C-2148-2D18-X	Center - 10"x14"x10" LH & RH - 10"x14"x10"	(2) - 18"	48"x21"	PBF-W2-10LF-X (Sold Separately)	PBF-4SM2-10LF-X (Sold Separately)

UNDERBAR INSULATED ICE BINS



UNDERBAR ICE BIN

- 18GA 300 Series Stainless Steel
- Insulated Ice Bin 12" Deep w/Drain
- Includes Removable Soda Line Access Plate On Cold Plate Models Only
- Includes Pre-Drilled Attachment Holes To Securely Attach Adjacent Equipment Together For A Uniform Underbar Area.
- Gusset Mounted Stainless Steel Legs & Bracing w/Adj. Bullet Feet
- Pre-Installed Threaded Inserts For Additional Accessory Options
- 29-1/2" Working Height
- Ice Bin Lids Included

COLD PLATE

- Stainless Steel Circuits In Solid Aluminum Plate
- Available In 7-Circuit And 10-Circuit Cold Plate



PRE-INSTALLED THREADED INSERTS FOR ADDITIONAL ACCESSORY OPTIONS



REMOVABLE SODA LINE ACCESS PLATE (COLD PLATE MODEL ONLY)



SLIM-LINE 18" WIDTH - W/O COLD PLATE

MODEL	L X W
UBIB-1812-X	12"x18"
UBIB-1824-X	24"x18"
UBIB-1830-X	30"x18"
UBIB-1836-X	36"x18"

STANDARD - 21" WIDTH - W/O COLD PLATE

MODEL	L X W
UBIB-2112-X	12"x21"
UBIB-2124-X	24"x21"
UBIB-2130-X	30"x21"
UBIB-2136-X	36"x21"

SLIM-LINE 18" WIDTH W/7-CIRCUIT COLD

MODEL	L X W
UBIB-1824-CP7-X	24"x18"
UBIB-1830-CP7-X	30"x18"
UBIB-1836-CP7-X	36"x18"

STANDARD - 21" WIDTH W/7-CIRCUIT COLD PLATE



MODEL	L X W
UBIB-2124-CP7-X	24"x21"
UBIB-2130-CP7-X	30"x21"
UBIB-2136-CP7-X	36"x21"

SLIM-LINE 18" WIDTH W/10-CIRCUIT COLD PLATE

MODEL	L X W
UBIB-1830-CP10-X	30"x18"
UBIB-1836-CP10-X	36"x18"

STANDARD - 21" WIDTH W/10-CIRCUIT COLD PLATE

MODEL	L X W
UBIB-2130-CP10-X	30"x21"
UBIB-2136-CP10-X	36"x21"

ADD-ON COCKTAIL LID WITH BOTTLE WELL HOLDER

MODEL	DESCRIPTION	FITS SIZES
UBIBL-1824-BWH-X	Slim-Line - 18" Width	24"x18"
UBIBL-1830-BWH-X	Slim-Line - 18" Width	30"x18"
UBIBL-1836-BWH-X	Slim-Line - 18" Width	36"x18"
UBIBL-2124-BWH-X	Standard - 21" Width	24"x21"
UBIBL-2130-BWH-X	Standard - 21" Width	30"x21"
UBIBL-2136-BWH-X	Standard - 21" Width	36"x21"




ADD-ON BOTTLE WELL HOLDER

MODEL	DESCRIPTION
UBBWH-18-X	Slim-Line - 18" Width Ice Bins Only
UBBWH-21-X	Standard - 21" Width Ice Bins Only

NEW PRODUCTS / UNDERBAR EQUIPMENT

FWFSF1022

UNDERBAR INSULATED DROP-IN ICE BINS

NSF

- 14GA Type 300 Stainless Steel Deck
- 18GA Type 300 Stainless Steel Base
- Includes Ice Bin Lid and Drain



PB-DIIB2820CP10-X



PB-DIIB2818-X

DROP-IN ICE BINS WITH 10-CIRCUIT COLD PLATE

MODEL	OVERALL SIZE (L X W X H)
PB-DIIB2820CP10-X	20"x28"x14-3/8"
PB-DIIB3420CP10-X	20"x34"x14-3/8"

DROP-IN ICE BINS

MODEL	OVERALL SIZE (L X W X H)
PB-DIIB1218-X	18"x12"x14-3/8"
PB-DIIB2218-X	18"x22"x14-3/8"
PB-DIIB2818-X	18"x28"x14-3/8"
PB-DIIB3418-X	18"x34"x14-3/8"

DROP-IN ICE BIN WITH WATER STATION

NSF

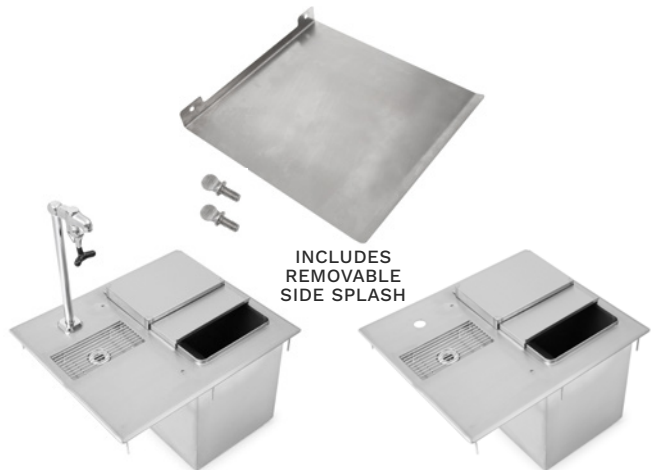
- 14GA Type 300 Stainless Steel Deck
- 18GA Type 300 Stainless Steel Base
- Includes Ice Bin Lid, Water Sink Grate, Removable Side Splash And Drains
- Optional With Or Without Glass Filler Faucet



PB-DIIBWS1821-P-X



PB-DIIBWS1821-X

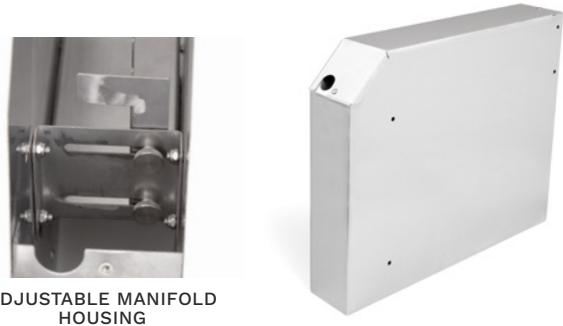


PB-DIIBWS2118-P-X

PB-DIIBWS2118-X

INCLUDES REMOVABLE SIDE SPLASH

MODEL	BASIN SIZE (L X W X D)	OVERALL SIZE (L X W X H)	FAUCET
PB-DIIBWS1821-P-X	13"x9"x11"	18"x21"x13"	INCLUDES FAUCET PBF-SGF-LF
PB-DIIBWS1821-X	13"x9"x11"	18"x21"x13"	N/A
PB-DIIBWS2118-P-X	9"x13"x11"	21"x18"x13"	INCLUDES FAUCET PBF-SGF-LF
PB-DIIBWS2118-X	9"x13"x11"	21"x18"x13"	N/A



ADJUSTABLE MANIFOLD HOUSING

UNDERBAR SODA GUN CHASE FILLER

NSF

NEW

- 18GA Type 300 Stainless Steel
- Mounts To Adjacent Underbar Equipment
- Slotted Key Holes On Back For Additional Mounting Options
- Removable Cover

MODEL	OVERALL SIZE (L X D X H)
UBSMH-1804-X	4"x18"x17"
UBSMH-2104-X	4"x21"x17"

DIPPER WELL & FAUCET



PB-DWBA-X



PBF-DWF-G-X

MODEL	DESCRIPTION
PB-DWBA-X	(1) Bowl 5-1/2"x5-1/2" (1) Basket 5"x4-1/2"
PBF-DWF-G-X	Dipper Well Faucet, Deck Mount, Lead Free, Chrome Plated

UNDERBAR LIQUOR DISPLAY



NEW

- 18GA 300 Series Stainless Steel
- 3 Or 4 Step Liquor Display
- Channel Mounted Stainless Steel Legs & Bracing W/Adj. Bullet Feet
- Includes Pre-Drilled Attachment Holes To Securely Attach Adjacent Equipment Together For A Uniform Underbar Area
- Includes "Z" Clips For Optional Wall Mounting/Securing
- 45° Angled Bottle Dividers For Easy Labeling

SLIM-LINE - 18" WIDTH - 3 STEP

MODEL	L X W
UBLD-1812-X	12"x18"
UBLD-1818-X	18"x18"
UBLD-1824-X	24"x18"

STANDARD - 21" WIDTH - 4 STEP

MODEL	L X W
UBLD-2112-X	12"x21"
UBLD-2118-X	18"x21"
UBLD-2124-X	24"x21"



UBLD-2124-X

UNDERBAR POINT OF SALE CABINET



NEW

- 18GA 300 Series Stainless Steel
- 6" High Back And Side Splashes
- 2" Rubber Grommet In Top Back Center To Route Cables
- Includes Pre-Drilled Attachment Holes To Securely Attach Adjacent Equipment Together For A Uniform Underbar Area
- Bolt-On Stainless Steel Legs & Bracing W/Adj. Bullet Feet
- Right Hand Hinged Door With Lock
- Vented Door For Increased Air Circulation
- 14-1/4" Opening In Front Base To House CPU
- 12"X12" Cutout In Back Of Unit For Electrical Accessibility

SLIM-LINE - 18" WIDTH

MODEL	L X W
UBPS-2418-R-X	18"x24"

STANDARD - 21" WIDTH

MODEL	L X W
UBPS-2424-R-X	24"x24"



2" CABLE ROUTING HOLE

UBPS-2418-R-X

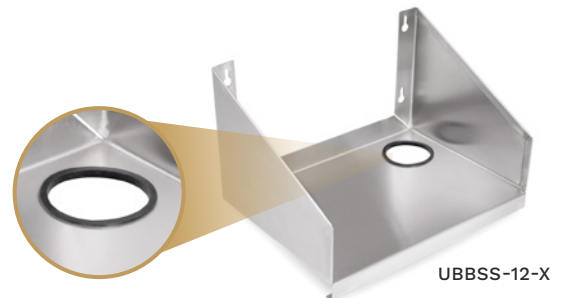
UNDERBAR BOLT-ON BLENDER SHELF



NEW

- 18GA 300 Series Stainless Steel
- Bolt-On
- Electric Cord Cut-Out With Rubber Grommet

MODEL	L X W
UBBSS-12-X	12"x8"
UBBSS-18-X	18"x8"



UBBSS-12-X

NEW PRODUCTS / UNDERBAR EQUIPMENT

FWFSF1022



UBSC-2124-X

UNDERBAR STORAGE CABINET WITH DRAINBOARD

NSF

NEW

- 18GA 300 Series Stainless Steel
- Includes Drain Hose
- Drain Board With Removable Perforated Insert
- Right Hand Hinged Door With Lock
- Includes "Z" Clips For Optional Wall Mounting/Securing
- Bolt-On Stainless Steel Legs & Bracing w/Adj. Bullet Feet
- Includes Pre-drilled Attachment Holes To Securely Attach Adjacent Equipment Together For A Uniform Underbar Area

SLIM-LINE - 18" WIDTH

MODEL	L X W
UBSC-1818-R-X	18"x18"
UBSC-1824-R-X	24"x18"

STANDARD - 21" WIDTH

MODEL	L X W
UBSC-2118-R-X	18"x21"
UBSC-2124-R-X	24"x21"



UBGR-2124-X



ADJUSTABLE RACK SLIDES

UNDERBAR GLASS RACK STORAGE CABINET

NSF

NEW

- 18GA 300 Series Stainless Steel
- Includes Drain Hose
- Drain Board With Removable Perforated Insert
- Bolt-On Stainless Steel Legs & Bracing W/Adj Bullet Feet
- Adjustable Rack Slides: Supports (2) 20"X20" Glass Racks With Tall Stemware Or (3) 20"X20" Glass Racks With Standard Height Glassware (Not Included)
- Includes "Z" Clips For Optional Wall Mounting/Securing
- Includes Pre-Drilled Attachment Holes To Securely Attach Adjacent Equipment Together For A Uniform Underbar Area

MODEL	L X W
UBGR-2124-X	24"x21"



D2020-GT-X

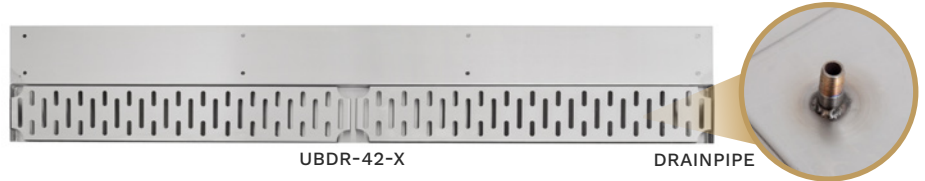
GLASS RACK DOLLIES

- Aluminum Construction
- 3" Plate Casters
- Glass Racks Not Included

MODEL	L X W
D2020-GT-X	21"x21"

UNDERBAR BAR DRAINS

- 18GA Type 300 Stainless Steel With #4 Polish, Satin Finish
- 4" Front To Back Trough
- 8" Front To Back Overall Depth
- 3/4" Deep Trough
- Removable Perforated Grate With Finger Holes
- Drainpipe 1" Long With 1/4" MPT Threads

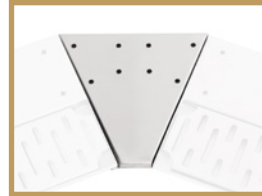


UBDR-42-X

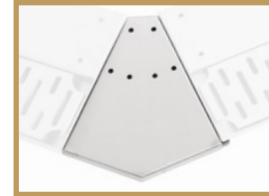
DRAINPIPE

BAR DRAINS

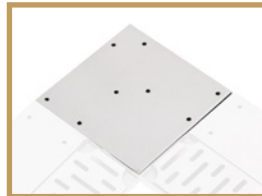
MODEL	DESCRIPTION
UBDR-12-X	12"x8"
UBDR-18-X	18"x8"
UBDR-24-X	24"x8"
UBDR-30-X	30"x8"
UBDR-36-X	36"x8"
UBDR-42-X	42"x8"
UBDR-48-X	48"x8"



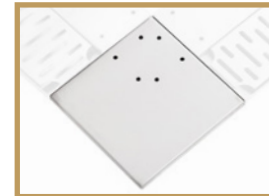
UBDR-45-IC-X



UBDR-45-OC-X



UBDR-90-IC-X



UBDR-90-OC-X

CORNER FILLERS

MODEL	DESCRIPTION
UBDR-90-IC-X	90° Inside Corner
UBDR-90-OC-X	90° Outside Corner
UBDR-45-IC-X	45° Inside Corner
UBDR-45-OC-X	45° Outside Corner

UNDERBAR DRAIN BOARDS



- 18GA 300 Series Stainless Steel
- Channel Mounted Stainless Steel Legs & Bracing w/Adj. Bullet Feet
- Includes Pre-Drilled Attachment Holes To Securely Attach Adjacent Equipment Together For A Uniform Underbar Area
- Pre-Installed Threaded Inserts For Additional Accessory Options
- Includes "Z" Clips For Optional Wall Mounting/Securing
- Drain Board With Removable Perforated Insert



PRE-INSTALLED THREADED INSERTS FOR ADDITIONAL ACCESSORY OPTIONS



UBDB-1824-X

SLIM-LINE - 18" WIDTH

MODEL	L X W
UBDB-1812-X	12"x18"
UBDB-1818-X	18"x18"
UBDB-1824-X	24"x18"
UBDB-1830-X	30"x18"
UBDB-1836-X	36"x18"

STANDARD - 21" WIDTH

MODEL	L X W
UBDB-2112-X	12"x21"
UBDB-2118-X	18"x21"
UBDB-2124-X	24"x21"
UBDB-2130-X	30"x21"
UBDB-2136-X	36"x21"

UNDERBAR CORNER DRAIN BOARD



- 18GA 300 Series Stainless Steel
- Channel Mounted Stainless Steel Legs & Bracing w/Adj. Bullet Feet
- Includes Pre-Drilled Attachment Holes To Securely Attach Adjacent Equipment Together For A Uniform Underbar Area
- Includes "Z" Clips For Optional Wall Mounting/Securing
- Drain Board With Removable Perforated Insert

SLIM-LINE - 18" WIDTH

MODEL	L X W
UBDB-1818-90-IC-X	18"x18"

STANDARD - 21" WIDTH

MODEL	L X W
UBDB-2121-90-IC-X	21"x21"



UBDB-1818-90-IC-X

UNDERBAR EQUIPMENT / NEW PRODUCTS

FWFSF1022



UBHS-2112-X

UNDERBAR HAND SINK W/SOAP & TOWEL DISPENSER

NSF

NEW

- 18GA Stainless Steel
- 4" O.C. Splash Mount Faucet Holes With Removable Mounting Faucet Plate
- Soap & Paper Towel Dispenser
- Channel Mounted Stainless Steel Legs & Bracing w/Adj. Bullet Feet
- Includes Pre-Drilled Attachment Holes To Securely Attach Adjacent Equipment Together For A Uniform Underbar Area
- Includes "Z" Clips For Optional Wall Mounting/Securing
- * Requires Shallow Splash Mount Faucet (Sold Separately)
- * Flexible Water Line Connectors Recommended With Shallow Mount Faucets (Sold Separately)

SLIM-LINE - 18" WIDTH

MODEL	L X W	ECONOMY FAUCET	HEAVY DUTY FAUCET
UBHS-1812-X	12"x18"	PBF-W2-3GLF-X (Sold Separately)	PBF-4SM2-3GLF-X (Sold Separately)

STANDARD - 21" WIDTH

MODEL	L X W	ECONOMY FAUCET	HEAVY DUTY FAUCET
UBHS-2112-X	12"x21"	PBF-W2-3GLF-X (Sold Separately)	PBF-4SM2-3GLF-X (Sold Separately)



UBDS-2112-X



PRE-INSTALLED THREADED INSERTS FOR ADDITIONAL ACCESSORY OPTIONS

UNDERBAR DUMP SINK

NSF

NEW

- 18GA 300 Series Stainless Steel
- Fabricated Sink Bowl: 14"x10"x6"
- Stainless Steel Scrap Basket Included
- 4" O.C. Splash Mount Faucet Holes With Removable Mounting Faucet Plate
- Channel Mounted Stainless Steel Legs & Bracing w/Adj. Bullet Feet
- Includes Pre-Drilled Attachment Holes To Securely Attach Adjacent Equipment Together For A Uniform Underbar Area
- Includes "Z" Clips For Optional Wall Mounting/Securing
- Pre-Installed Threaded Inserts For Additional Accessory Options
- 29-1/2" Working Height
- * Requires Shallow Splash Mount Faucet (Sold Separately)
- * Flexible Water Line Connectors Recommended With Shallow Mount Faucets (Sold Separately)

SLIM-LINE - 18" WIDTH

MODEL	L X W	ECONOMY FAUCET	HEAVY DUTY FAUCET
UBDS-1812-X	12"x18"	PBF-W2-6LF-X (Sold Separately)	PBF-4SM2-6LF-X (Sold Separately)

STANDARD - 21" WIDTH

MODEL	L X W	ECONOMY FAUCET	HEAVY DUTY FAUCET
UBDS-2112-X	12"x21"	PBF-W2-6LF-X (Sold Separately)	PBF-4SM2-6LF-X (Sold Separately)



UBSR2-18-X

UNDERBAR SPEED RAILS

NSF

NEW

- 18GA 300 Series Stainless Steel
- Keyhole Mount

LENGTH	SINGLE TIER	DOUBLE TIER
12"	UBSR1-12-X	UBSR2-12-X
18"	UBSR1-18-X	UBSR2-18-X
24"	UBSR1-24-X	UBSR2-24-X
30"	UBSR1-30-X	UBSR2-30-X
36"	UBSR1-36-X	UBSR2-36-X
42"	UBSR1-42-X	UBSR2-42-X
48"	UBSR1-48-X	UBSR2-48-X

UNDERBAR BLENDER STATION



- 18GA 300 Series Stainless Steel
- 4" O.C. Splash Mount Faucet Holes With Removable Mounting Faucet Plate
- Channel Mounted Stainless Steel Legs & Bracing W/Adj Bullet Feet
- Includes Pre-Drilled Attachment Holes To Securely Attach Adjacent Equipment Together For A Uniform Underbar Area
- Includes "Z" Clips For Optional Wall Mounting/Securing
- 2" Rubber Grommet To Route Electrical Cord
- 29-1/2" Working Height

*** Requires Shallow Splash Mount Faucet (Sold Separately)**
*** Flexible Water Line Connectors Recommended With Shallow Mount Faucets (Sold Separately)**

SLIM-LINE - 18" WIDTH

MODEL	FAB SINK BOWL SIZE	L X W	ECONOMY FAUCET	HEAVY DUTY FAUCET
UBBS-1824-X	14"x10"x6"	24"x18"	PBF-W2-6LF-X (Sold Separately)	PBF-4SM2-6LF-X (Sold Separately)

STANDARD - 21" WIDTH

MODEL	FAB SINK BOWL SIZE	L X W	ECONOMY FAUCET	HEAVY DUTY FAUCET
UBBS-2112-X	10"x8"x6"	12"x21"	PBF-W2-3GLF-X (Sold Separately)	PBF-4SM2-3GLF-X (Sold Separately)



UBBS-1824

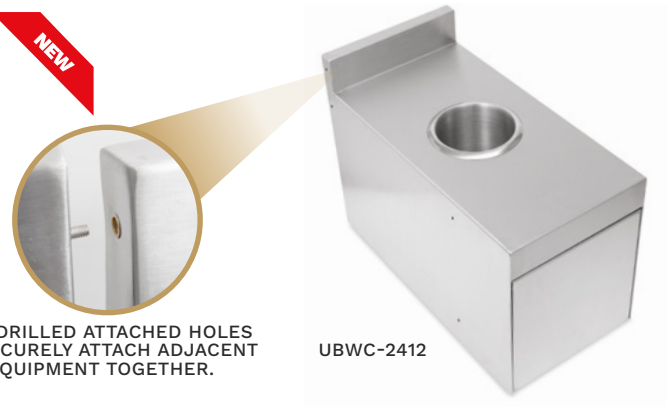
UBBS-2112

UNDERBAR TRASH RECEPTACLE COVER WITH WASTE CHUTE



- 18GA 300 Series Stainless Steel
- Includes Predrilled Attachment Holes To Securely Attach Adjacent Equipment Together For A Uniform Underbar Area
- Removable Trash Chute
- Mounts Between Existing Equipment
- Includes "Z" Clips For Optional Wall Mounting/Securing
- Accommodates Rubbermaid Slim Jim® 16 Gal Trash Can (22" L X11" W X25" H) Not Included

MODEL	L X W
UBWC-2412-X	12"x24"



PRE-DRILLED ATTACHED HOLES TO SECURELY ATTACH ADJACENT EQUIPMENT TOGETHER.

UBWC-2412

UNDERBAR SIDE SPLASH KIT



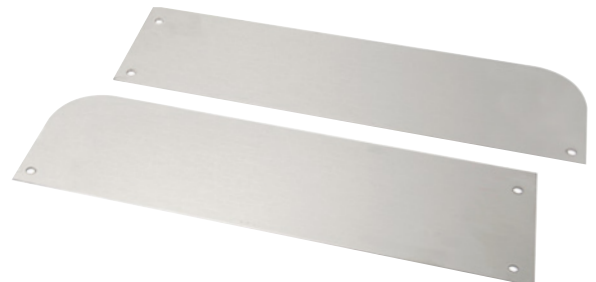
- 18GA Type 300 Stainless Steel
- Each Side Splash Sold Separately

SLIM-LINE - 18" WIDTH

MODEL	DESCRIPTION	L X W
UBSS-18-L-X	LH - (3) Screws	18"x5"
UBSS-18-R-X	RH - (3) Screws	18"x5"

STANDARD - 21" WIDTH

MODEL	DESCRIPTION	L X W
UBSS-21-L-X	LH - (3) Screws	21"x5"
UBSS-21-R-X	RH - (3) Screws	21"x5"



HYGIENE SOLUTIONS

FWFSF1022

HANDS-FREE SANITIZER DISPENSER & STAND

The John Boos Hands-Free Sanitizer Dispenser and Stand provides a quick and easy hand sanitizing solution. The free-standing, touchless sanitizer dispenser, with a heavy-duty cast iron base, is integral for use in many establishments such as businesses, restaurants, schools, hospitals, and airports. The battery-operated dispenser mounts easily to the universal mounting plate with screws or double-sided tape. It also includes a power switch to help save battery life. Stand and dispenser sold separately.

Contact Us Today And Ask About Our Hands-Free Options!



PB-SD-2

HANDS-FREE SANITIZER DISPENSER

- Hands-Free Activation
- Easy-To-Fill Dispenser
- 36oz Bulk Fill Dispenser
(For Use With Gel Sanitizer And Soap Only)
- Optional Tamper Free Lock With Key
- Battery Operated With On And Off Switch
- Perfect For Any Establishment

MODEL	DESCRIPTION
PB-SD-2-X	Hands-Free Sanitizer Dispenser



SHOWN WITH DISPENSER.
(SOLD SEPARATELY)

POWDER-COATED DISPENSER STAND

- Heavy Duty Cast Iron Base, Black Powder-Coating
- Easy To Assemble Stand
- Universal Mounting Plate (For Mounting With Screws Or Doubled Sided Tape)
- Adjustable Floor Glides
- Knockdown Design

***NOTE: Dispenser Not Included**

MODEL	DESCRIPTION	SIZE (L X W X H)
SDS-BB-1-X	Black Powder-Coated Sanitizer Stand	45"x45"x46-1/2"

WALL-MOUNT HAND SANITIZER HOLDER

- 14GA Construction
- Type 300 Stainless Steel With #4 Polish Satin Finish
- 6-1/2" Diameter Hole - Fits Standard Gallon Pump Bottles of Soap Or Hand Sanitizer
- Small Footprint
- Easily Mounts Near Entry Ways

***NOTE: Sanitizer Dispenser Not Included**



MODEL	OVERALL SIZE (L X W X H)
SDS-W-1-X	8"x8"x7"

HAND SANITIZER STAND

- 16GA Type 300 Series Stainless Steel With #4 Polish Satin Finish
- Height Adjustable Support Arm Fits Up To 16" Tall Dispensers With Less Than 2" Diameter Collar
- 8"x8" Base Fits Dispenser Bases Up To 7" In Diameter
- Base Plate Is Slotted For The Height Adjustable Support Arm Stability
- 16"x16" Weighted Square Base For Added Stability With Leveling Feet
- Knockdown Design

***NOTE: Dispenser Not Included**



MODEL	DIMENSIONS (L X W X H)	MAX. OVERALL HEIGHT
SDS-SB-2-X	16"x16"x24"	40"
SDS-SB-3-X	16"x16"x36"	52"

WALL-MOUNT GLOVE DISPENSER UNIT

- 18GA Type 300 Stainless Steel Constructions With #4 Polish Satin Finish
- Strong And Durable Construction
- Mounts Securely To Wall Vertically Or Horizontally
- Holds Most Standard Sized Boxes Of Tissue, Masks, Or Gloves
- Great For Back Of House Foodservice Prep Areas
- Available In 1, 2, 3 or 4 Compartments
- Easy To Clean, Load, And Mount

***NOTE: Gloves Not Included**



MOUNTS HORIZONTALLY OR VERTICALLY (DS-3 SHOWN)

MODEL	OVERALL SIZE (L X W X H)
DS-1-X	5- 1/4"x4-1/2"x9-1/8" (1 Compartment)
DS-2-X	10-1/8"x4-1/2"x9-1/8" (2 Compartment)
DS-3-X	15-1/8"x4-1/2"x9-1/8" (3 Compartment)
DS-4-X	20-1/8"x4-1/2"x9-1/8" (4 Compartment)



HYGIENE STATION

- 18GA Stainless Steel Construction
- Type 300 Stainless Steel With #4 Polish Satin Finish
- Includes Wall Mount Hand Sanitizer Dispenser
- Three Compartments To Hold Latex Gloves, Masks, Or Tissues
- Made In The USA

***NOTE: Gloves & Masks Not Included**

MODEL	DIMENSIONS (L X W X H)
DS-SD1-3-X	20-1/2"x4-9/16"x11-1/8"



CABINETS

FWFSF1022



PBJC-224884-L-X



MOP/BROOM HOLDER WITH LOCKING CAM

DELUXE JANITOR CABINET WITH MOP SINK



- 18GA Type 300 Stainless Steel With #4 Polish Satin Finish
- (2) Vented Swing Doors With Lock Handles
- Available In Left Side or Right Side Configuration
- MOP SINK Compartment Side Includes:
 - (1) Oversized Mop Sink 20"x16"x12" with 3-1/2" Drain
 - (1) Overhead Storage Shelf With Panel Backing
 - (2) Mop/Broom Holders With Locking Cam On Front Shelf
 - Panel-Less Back
- Storage Compartment Side Includes:
 - (3) Storage Shelves
 - Bottom Storage Area
- Includes (1) Heavy Duty Service Faucet (PBF-SS-6-X)
- Includes (1) 10' Service Faucet Hose (PB-HOSE-120-X)

MODEL	DESCRIPTION	MOP SINK LOCATION	
PBJC-224884-L-X	48"x21-13/16"x84"	LEFT	
PBJC-224884-R-X	48"x21-13/16"x84"	RIGHT	



PBJC-303084-X

JANITOR CABINET WITH MOP SINK



- 18GA Type 300 Stainless Steel With #4 Polish Satin Finish
- All Exposed Hardware Is Tamper Proof
- (2) Vented Swing Doors With Lock Handles
- Overhead Storage Shelf With Panel Backing
- (2) Mop/Broom Holders With Locking Cam On Front Shelf
- Bottoms Of Bowls Formed For Drainage To 3-1/2" Diameter Die Stamped Opening
- Panel-less Back
- Includes (1) Heavy Duty Service Faucet (PBF-SS-6-X)
- Includes (1) 10' Service Faucet Hose (PB-HOSE-120-X)
- Mounting Location Of Service Faucet Can Be Specified By Kitchen Equipment Contractor

MODEL	BOWL (L X W X D)	DIMENSIONS (L X W X H)	
PBJC-222584-X	20"x16"x12"	25"x22"x84"	
PBJC-303084-X	24"x24"x12"	30"x30"x84"	



STORAGE CABINETS

- 18GA Type 400 Series Stainless Steel With #4 Polish, Satin Finish
- (4) Adjustable Stainless Steel Shelves
- Two Swing Lockable Doors
- Sloped Top
- Adjustable Bullet Feet
- Mounting Holes In Back Panel To Securely Fasten To Wall

MODEL	DIMENSIONS (L X W X H)	
TCH-223684-X	22"x36"x84"	
TCH-224884-X	22"x48"x84"	

MAT WASH CABINET

- 18GA Type 300 Stainless Steel With #4 Polish Satin Finish
- (2) Swing Double Panel Doors With Lock Handle
- Mat Hangers
- (1) Oversized Sink 38"x20"x6" with 3-1/2" Drain
- (1) Side Mounted Mop/Broom Holder With Locking Cam
- (1) Fold Down Chemical Shelf
- (1) Service Faucet and 10' hose
- Vented Door Panels
- Includes (1) Heavy Duty Service Faucet (PBF-SS-6-X)
- Includes (1) 10' Service Faucet Hose (PB-HOSE-120-X)

MODEL	DIMENSIONS (L X W X H)	MOP SINK SIZE (L X W X H)
PBMC-224884-X	43"x26"x83"	38"x20"x6"



BEVERAGE UNIT CABINET NSF

- 14GA Type 300 Stainless Steel Top with 5" High Rear Backsplash
- Stallion Edge Front, Straight Turndown on Sides
- 18GA Type 400 Stainless Steel Base
- Front Hinged Doors
- Stainless Steel Legs & Adjustable Feet
- 6" Diameter Trash Chute
- Accommodates 16 GAL Slim Jim Trash Can. Not Included. Clear dimensions 15" W x25-3/4" H.
- Overall Height 40-3/4"

MODEL	TRASH CHUTE LOCATION	L X W
4BU4R5-3648-L-X	Left Side	48"x36"
4BU4R5-3648-R-X	Right Side	48"x36"
4BU4R5-3660-L-X	Left Side	60"x36"
4BU4R5-3660-R-X	Right Side	60"x36"
4BU4R5-3672-L-X	Left Side	72"x36"
4BU4R5-3672-R-X	Right Side	72"x36"



4BU4R5-3672-L-X

ECONOMY DISH STORAGE CABINET NSF

- 18GA 300 Series Stainless Steel
- Fixed Mid-Shelf

MODEL	L X W
EDSC8-1548-X	48"x15"
EDSC8-1560-X	60"x15"
EDSC8-1572-X	72"x15"
EDSC8-1848-X	48"x18"
EDSC8-1860-X	60"x18"
EDSC8-1872-X	72"x18"



EDSC8-1560-X

MOBILE DRAWER CABINET NSF

- 18GA Type 300 Stainless Steel
- Stainless Steel Flat Top With Front Stallion Edge
- 3 Tier Drawer (Available With and Without Locks)
- Removable Pans
- Heavy Duty 5" Locking Casters
- Overall Height 33-3/4"

MODEL	DESCRIPTION	L X W
4CD4-2724-C-X	Locks - N/A	24"x26-1/2"
4CD4-2730-C-X	Locks - N/A	30"x26-1/2"
4CD4-2724-CL-X	Locks - Included	24"x26-1/2"
4CD4-2730-CL-X	Locks - Included	30"x26-1/2"



REMOVABLE PANS

4CD4-2724-CL-X

COMPARTMENT SINKS - "B-SERIES"



FWFSF1022

SINGLE, DOUBLE AND MULTI COMPARTMENT SINKS - "B-SERIES" 16 GA



- 16GA 300 Series Stainless Steel Bowl And Deck
- 8" O.C. Faucet Holes
- Stainless Steel Legs And Adj Bullet Feet
- Includes Front To Back Adj Stainless Bracing

1 COMPARTMENT SINK - "B-SERIES" 16 GA



1B18244-X



1B18244-1D18R-X



1B18244-1D18L-X



1B18244-2D18-X

MODEL	1 COMPARTMENT: BOWL SIZE (L X W X D)	L X W
1B16204-X	1 - 16"x20"x14"	21"x25-1/2"
1B16204-1D18L-X/1D18R-X	1 - 16"x20"x14" (18" LH or RH Drain Board)	38"x25-1/2"
1B16204-2D18-X	1 - 16"x20"x14" (18" LH & RH Drain Board)	55"x25-1/2"
1B184-X	1 - 18"x18"x14"	23"x23-1/2"
1B184-1D18L-X/1D18R-X	1 - 18"x18"x14" (18" LH or RH Drain Board)	40"x23-1/2"
1B184-2D18-X	1 - 18"x18"x14" (18" LH & RH Drain Board)	57"x23-1/2"
1B18244-X	1 - 18"x24"x14"	23"x29-1/2"
1B18244-1D18L-X/1D18R-X	1 - 18"x24"x14" (18" LH or RH Drain Board)	40"x29-1/2"
1B18244-2D18-X	1 - 18"x24"x14" (18" LH & RH Drain Board)	57"x29-1/2"
1B18244-1D24L-X/1D24R-X	1 - 18"x24"x14" (24" LH or RH Drain Board)	46"x29-1/2"
1B18244-2D24-X	1 - 18"x24"x14" (24" LH & RH Drain Board)	69"x29-1/2"
1B244-X	1 - 24"x24"x14"	29"x29-1/2"
1B244-1D24L-X/1D24R-X	1 - 24"x24"x14" (24" LH or RH Drain Board)	52"x29-1/2"
1B244-2D24-X	1 - 24"x24"x14" (24" LH & RH Drain Board)	75"x29-1/2"



2B18244-X



2B18244-1D18L-X



2B18244-1D18R-X



2B18244-2D18-X

2 COMPARTMENT SINKS - "B-SERIES" 16 GA

MODEL	2 COMPARTMENT: BOWL SIZE (L X W X D)	L X W
2B16204-X	2 - 16"x20"x14"	37"x25-1/2"
2B16204-1D18L-X/1D18R-X	2 - 16"x20"x14" (18" LH or RH Drain Board)	54"x25-1/2"
2B16204-2D18-X	2 - 16"x20"x14" (18" LH & RH Drain Board)	71"x25-1/2"
2B184-X	2 - 18"x18"x14"	41"x23-1/2"
2B184-1D18L-X/1D18R-X	2 - 18"x18"x14" (18" LH or RH Drain Board)	58"x23-1/2"
2B184-2D18-X	2 - 18"x18"x14" (18" LH & RH Drain Board)	75"x23-1/2"
2B18244-X	2 - 18"x24"x14"	41"x29-1/2"
2B18244-1D18L-X/1D18R-X	2 - 18"x24"x14" (18" LH or RH Drain Board)	58"x29-1/2"
2B18244-2D18-X	2 - 18"x24"x14" (18" LH & RH Drain Board)	75"x29-1/2"
2B244-X	2 - 24"x24"x14"	53"x29-1/2"
2B244-1D24L-X/1D24R-X	2 - 24"x24"x14" (24" LH or RH Drain Board)	76"x29-1/2"
2B244-2D24-X	2 - 24"x24"x14" (24" LH & RH Drain Board)	99"x29-1/2"



COMPARTMENT SINKS - "B-SERIES"

FWFSF1022

3 COMPARTMENT SINKS "B-SERIES" 16 GA



- 16GA 300 Series Stainless Steel Bowl And Deck
- 8" O.C. Faucet Holes
- Stainless Steel Legs And Adj Bullet Feet
- Includes Front To Back Adj Stainless Bracing

MODEL	3 COMPARTMENT: BOWL SIZE (L X W X D)	L X W
3B16204-X	3 - 16"x20"x14"	53"x25-1/2"
3B16204-1D18L-X/1D18R-X	3 - 16"x20"x14" (18" LH or RH Drain Board)	70"x25-1/2"
3B16204-2D18-X	3 - 16"x20"x14" (18" LH & RH Drain Board)	87"x25-1/2"
3B16204-2D24-X	3 - 16"x20"x14" (24" LH & RH Drain Board)	99"x25-1/2"
3B16204-2D36-X	3 - 16"x20"x14" (36" LH & RH Drain Board)	123"x25-1/2"
3B184-X	3 - 18"x18"x14"	59"x25-1/2"
3B184-1D18L-X/1D18R-X	3 - 18"x18"x14" (18" LH or RH Drain Board)	76"x25-1/2"
3B184-2D18-X	3 - 18"x18"x14" (18" LH & RH Drain Board)	93"x25-1/2"
3B18244-X	3 - 18"x24"x14"	59"x29-1/2"
3B18244-1D18L-X/1D18R-X	3 - 18"x24"x14" (18" LH or RH Drain Board)	76"x29-1/2"
3B18244-2D18-X	3 - 18"x24"x14" (18" LH & RH Drain Board)	93"x29-1/2"
3B18244-2D24-X	3 - 18"x24"x14" (24" LH & RH Drain Board)	105"x29-1/2"
3B20304-2D20-X	3 - 20"x30"x14" (20" LH & RH Drain Board)	103"x35-1/2"
3B20304-2D24-X	3 - 20"x30"x14" (24" LH & RH Drain Board)	111"x35-1/2"
3B20304-2D30-X	3 - 20"x30"x14" (30" LH & RH Drain Board)	123"x35-1/2"
3B244-X *	3 - 24"x24"x14"	77"x29-1/2"
3B244-1D24L-X/1D24R-X *	3 - 24"x24"x14" (24" LH or RH Drain Board)	100"x29-1/2"
3B244-2D24-X *	3 - 24"x24"x14" (24" LH & RH Drain Board)	123"x29-1/2"

***NOTE: (Supplied with 2 Sets of Faucet Holes)**



3B18244-X



3B18244-1D18L-X



3B18244-1D18R-X



3B18244-2D18-X

4 COMPARTMENT SINKS - "B-SERIES" 16 GA

MODEL	4 COMPARTMENT: BOWL SIZE (L X W X D)	L X W
4B18244-2D18-X *	4 - 18"x24"x14" (18" LH & RH Drain Board)	111"x29-1/2"

***NOTE: (Supplied with 2 Sets of Faucet Holes)**



4B18244-2D18-X

COMPARTMENT SINK SIDE SPLASH

- 18GA 300 Stainless Steel
- Fits Left or Right Side Of Sink
- Sold Individually



MODEL	FITS BOWL WIDTH
PB-RES-18-X	18"
PB-RES-20-X	20"
PB-RES-24-X	24"

COMPARTMENT SINKS - "E-SERIES"



FWFSF1022

SINGLE, DOUBLE AND MULTI COMPARTMENT SINKS: "E-SERIES" 18 GA



- 18GA 300 Series Stainless Steel Bowl And Deck
- Galvanized Legs And Adj Plastic Bullet Feet
- 8" O.C. Faucet Holes



E1S8-1620-12-X

12" DEEP BOWL - 1 COMPARTMENT SINK - "E-SERIES" 18 GA

MODEL	1 COMPARTMENT: BOWL SIZE (L X W X D)	L X W
E1S8-1620-12-X	1 - 16"x20"x12"	21"x25-1/2"
E1S8-1620-12L18-X/12R18-X	1 - 16"x20"x12" (18" LH or RH Drain Board)	36-1/2"x25-1/2"
E1S8-1620-12T18-X	1 - 16"x20"x12" (18" LH & RH Drain Board)	52"x25-1/2"
E1S8-18-12-X	1 - 18"x18"x12"	23"x23-1/2"
E1S8-18-12L18-X/12R18-X	1 - 18"x18"x12" (18" LH or RH Drain Board)	38-1/2"x23-1/2"
E1S8-18-12T18-X	1 - 18"x18"x12" (18" LH & RH Drain Board)	54"x23-1/2"

12" DEEP BOWL - 2 COMPARTMENT SINKS - "E-SERIES" 18 GA

MODEL	2 COMPARTMENT: BOWL SIZE (L X W X D)	L X W
E2S8-1620-12-X	2 - 16"x20"x12"	37"x25-1/2"
E2S8-1620-12L18-X/12R18-X	2 - 16"x20"x12" (18" LH or RH Drain Board)	52-1/2"x25-1/2"
E2S8-1620-12T18-X	2 - 16"x20"x12" (18" LH & RH Drain Board)	68"x25-1/2"
E2S8-18-12-X	2 - 18"x18" 12"	41"x23-1/2"
E2S8-18-12L18-X/12R18-X	2 - 18"x18" 12" (18" LH or RH Drain Board)	56-1/2"x23-1/2"
E2S8-18-12T18-X	2 - 18"x18" 12" (18" LH & RH Drain Board)	72"x23-1/2"

12" DEEP BOWL - 3 COMPARTMENT SINKS - "E-SERIES" 18 GA

MODEL	3 COMPARTMENT: BOWL SIZE (L X W X D)	L X W
E3S8-1220-12T12-X	3 - 12"x20"x12" (12" LH & RH Drain Board)	60"x25-1/2"
E3S8-1416-12T12-X	3 - 14"x16"x12" (12" LH & RH Drain Board)	66"x21-1/2"
E3S8-1620-12-X	3 - 16"x20"x12"	53"x25-1/2"
E3S8-1620-12L18-X/12R18-X	3 - 16"x20"x12" (18" LH or RH Drain Board)	68-1/2"x25-1/2"
E3S8-1620-12T18-X	3 - 16"x20"x12" (18" LH & RH Drain Board)	84"x25-1/2"
E3S8-18-12-X	3 - 18"x18" 12"	59"x23-1/2"
E3S8-18-12L18-X/12R18-X	3 - 18"x18" 12" (18" LH or RH Drain Board)	74-1/2"x23-1/2"
E3S8-18-12T18-X	3 - 18"x18" 12" (18" LH & RH Drain Board)	90"x23-1/2"

MULTI BOWL COMPARTMENT SINKS - "E-SERIES" 18 GA

MODEL	3 COMPARTMENT: BOWL SIZE (L X W X D)	L X W
E3S8-1014-10-X	3 - 10"x14"x10"	35"x19-1/2"
E3S8-1014-10L15-X/10R15-X	3 - 10"x14"x10" (15" LH or RH Drain Board)	47-1/2"x19-1/2"
E3S8-1014-10T15-X	3 - 10"x14"x10" (15" LH & RH Drain Board)	60"x19-1/2"



E2S8-18-12T18-X



E3S8-18-12T18-X

STAINLESS STEEL LEGS & FEET



MODEL	STAINLESS STEEL LEGS & FEET
SLEG-20B-4-X	Set of 4 - 14" Deep Bowls
SLEG-22B-4-X	Set of 4 - 12" Deep Bowls
SLEG-24B-4-X	Set of 4 - 10" Deep Bowls

LEG BRACING KITS - "E-SERIES" 18 GA SINKS

GALVANIZED BRACING

MODEL	BOWL WIDTH
EBK-G14-X	14" Bowls
EBK-G15-X	15" Bowls
EBK-G16-X	16" Bowls
EBK-G18-X	18" Bowls
EBK-G20-X	20" Bowls
EBK-G24-X	24" Bowls
EBK-G30-X	30" Bowls

STAINLESS STEEL BRACING

MODEL	BOWL WIDTH
EBK-S14-X	14" Bowls
EBK-S15-X	15" Bowls
EBK-S16-X	16" Bowls
EBK-S18-X	18" Bowls
EBK-S20-X	20" Bowls
EBK-S24-X	24" Bowls
EBK-S30-X	30" Bowls



COMPARTMENT SINKS - "E-SERIES"

FWFSF1022

14" DEEP BOWL - 1 COMPARTMENT SINK - "E-SERIES" 18 GA

MODEL	1 COMPARTMENT: BOWL SIZE (L X W X D)	L X W
E1S8-15-14-X	1 - 15"x15"x14"	19"x20-1/2"
E1S8-15-14L15-X/R15-X	1 - 15"x15"x14" (15" LH or RH Drain Board)	33"x20-1/2"
E1S8-15-14T15-X	1 - 15"x15"x14" (15" LH & RH Drain Board)	47"x20-1/2"
E1S8-1824-14-X	1 - 18"x24"x14"	23"x29-1/2"
E1S8-1824-14L24-X/14R24-X	1 - 18"x24"x14" (24" LH or RH Drain Board)	44-1/2"x29-1/2"
E1S8-1824-14T24-X	1 - 18"x24"x14" (24" LH & RH Drain Board)	66"x29-1/2"
E1S8-24-14-X	1 - 24"x24"x14"	29"x29-1/2"
E1S8-24-14L24-X/14R24-X	1 - 24"x24"x14" (24" LH or RH Drain Board)	50-1/2"x29-1/2"
E1S8-24-14T24-X	1 - 24"x24"x14" (24" LH & RH Drain Board)	72"x29-1/2"



E1S8-1824-14-X



E1S8-1824-14L24-X



E1S8-1824-14R24-X



E1S8-1824-14T24-X



E2S8-24-14-X



E2S8-24-14L24-X



E2S8-24-14R24-X



E2S8-24-14T24-X

14" DEEP BOWL - 2 COMPARTMENT SINK - "E-SERIES" 18 GA

MODEL	2 COMPARTMENT: BOWL SIZE (L X W X D)	L X W
E2S8-24-14-X	2 - 24"x24"x14"	53"x29-1/2"
E2S8-24-14L24-X/14R24-X	2 - 24"x24"x14" (24" LH or RH Drain Board)	74-1/2"x29-1/2"
E2S8-24-14T24-X	2 - 24"x24"x14" (24" LH & RH Drain Board)	96"x29-1/2"

14" DEEP BOWL - 3 COMPARTMENT SINK - "E-SERIES" 18 GA

MODEL	3 COMPARTMENT: BOWL SIZE (L X W X D)	L X W
E3S8-15-14-X	3 - 15"x15"x14"	50-1/2"x20-1/2"
E3S8-15-14L15-X/R15-X	3 - 15"x15"x14" (15" LH or RH Drain Board)	62-1/2"x20-1/2"
E3S8-15-14T15-X	3 - 15"x15"x14" (15" LH & RH Drain Board)	75"x20-1/2"
E3S8-1620-14T18-X	3 - 16"x20"x14" (18" LH & RH Drain Board)	84"x25-1/2"
E3S8-18-14T18-X	3 - 18"x18"x14" (18" LH & RH Drain Board)	90"x23-1/2"
E3S8-18-14T24-X	3 - 18"x18"x14" (24" LH & RH Drain Board)	102"x23-1/2"
E3S8-1824-14L24-X/14R24-X	3 - 18"x24"x14" (24" LH or RH Drain Board)	80"x29-1/2"
E3S8-1824-14T24-X	3 - 18"x24"x14" (24" LH & RH Drain Board)	104"x29-1/2"
E3S8-24-14-X	3 - 24"x24"x14"	77"x29-1/2"
E3S8-24-14L24-X/14R24-X *	3 - 24"x24"x14" (24" LH or RH Drain Board)	98-1/2"x29-1/2"
E3S8-24-14T24-X *	3 - 24"x24"x14" (24" LH & RH Drain Board)	120"x29-1/2"
E3S8-2030-14T24-X *	3 - 20"x30"x14" (24" LH & RH Drain Board)	108"x35-1/2"



E3S8-1824-14L24-X



E3S8-1824-14T24-X

***NOTE: (Supplied with 2 Sets of Faucet Holes)**

14" DEEP BOWL - 4 COMPARTMENT SINK - "E-SERIES" 18 GA

MODEL	4 COMPARTMENT: BOWL SIZE (L X W X D)	L X W
E4S8-1620-14T18-X *	4 - 16"x20"x14" (18" LH & RH Drain Board)	100"x25-1/2"



***NOTE: (Supplied with 2 Sets of Faucet Holes)**

BUDGET SINKS / MOBILE SOAK SINK

FWFSF1022



3BCS-184-2D18-X

3 COMPARTMENT CORNER SINKS



- 14" Deep Fabricated Bowls
- 8" O.C. Faucet Holes

16GA - "B-SERIES" - STAINLESS STEEL LEGS & ADJUSTABLE BRACING

MODEL	BOWL SIZE (L X W X D)	L X W
3BCS-184-2D18-X	3-18"x18"x14" (18" LH & RH Drain Board)	58-1/2"x23-1/2"

18GA - "E-SERIES" - GALVANIZED LEGS & ADJUSTABLE BRACING

MODEL	BOWL SIZE (L X W X D)	L X W
E3BCS-184-2D18-X	3-18"x18"x14" (18" LH & RH Drain Board)	58-1/2"x23-1/2"
E3BCS-244-2D24-X	3-24"x24"x14" (24" LH & RH Drain Board)	75"x29-1/2"



MOBILE SOAK SINK



- 16GA 300 Series Stainless Steel
- Marine Edge With Corner Bumpers
- Stainless Steel Legs w/Locking Casters
- 20" Working Height w/Twist Lever Waste

MODEL	SINK SIZE (L X W X D)
PB-SS-208-X	20"x20"x8"

LOOKING FOR MORE STAINLESS STEEL PRODUCTS?

WORK TABLES • COMPARTMENT SINKS • WALL SHELVES DISH TABLES • UNDERBAR • FAUCETS • MODULAR CABINETS
STORAGE RACKS • HYGIENE SOLUTIONS • HAND SINKS • AND MANY MORE CUSTOM STAINLESS STEEL PRODUCTS!

VIEW OUR FULL PRODUCT LINE ON:



- ACCESS TO PRODUCT SPECIFICATION SHEETS
- CAD BLOCKS & REVIT FAMILIES AVAILABLE FOR DESIGN
- IMAGES, OPTIONS, AND DETAILED DESCRIPTION OF PRODUCTION

- UP-TO-DATE PRICING
- WORK SMARTER WITH THE INDUSTRIES GO-TO SOFTWARE
- DESIGN SMARTER AND QUOTE BETTER

Or Contact John Boos For Additional Information & Inquiries

WWW.JOHNBOOS.COM

ECONOMY PREP WORK TABLES W/SINK BOWL

- 18GA Stainless Steel Construction
- Optional Stainless Steel or Galvanized Legs and Undershef
- Sink Bowl 16"x20"x10" deep with 4" O.C. Faucet Holes
- Table Punched for 4" Deck Mount Faucet (Faucet Not Included)

STAINLESS STEEL LEGS & UNDERSHELF

MODEL	SINK SIZE (L X W X D)	L X W
EPT8R5-3048SSK-L-X/SSK-R-X	16"x20"x10" (LH or RH)	48"x30"
EPT8R5-3060SSK-L-X/SSK-R-X	16"x20"x10" (LH or RH)	60"x30"
EPT8R5-3072SSK-L-X/SSK-R-X	16"x20"x10" (LH or RH)	72"x30"

GALVANIZED LEGS & UNDERSHELF

MODEL	SINK SIZE (L X W X D)	L X W
EPT8R5-3048GSK-L-X/GSK-R-X	16"x20"x10" (LH or RH)	48"x30"
EPT8R5-3060GSK-L-X/GSK-R-X	16"x20"x10" (LH or RH)	60"x30"
EPT8R5-3072GSK-L-X/GSK-R-X	16"x20"x10" (LH or RH)	72"x30"



EPT8R5-3060SSK-R-X

PREP WORK TABLES W/SINK BOWL

- 16GA 300 Series Stainless Steel
- Includes 4" Deckmount Faucet And 10" Spout (PBF-4DM-10LF-X)
- Adjustable Undershef

PREP TABLES W/GALVANIZED LEGS & ADJUSTABLE UNDERSHELF

MODEL	SINK SIZE (L X W X D)	L X W
EPT6R5-3048GSK-L-X/GSK-R-X	16"x20"x12" (LH or RH)	48"x30"
EPT6R5-3060GSK-L-X/GSK-R-X	16"x20"x12" (LH or RH)	60"x30"
EPT6R5-3072GSK-L-X/GSK-R-X	16"x20"x12" (LH or RH)	72"x30"

PREP TABLES W/STAINLESS STEEL LEGS & ADJUSTABLE UNDERSHELF

MODEL	SINK SIZE (L X W X D)	L X W
EPT6R5-3048SSK-L-X/SSK-R-X	16"x20"x12" (LH or RH)	48"x30"
EPT6R5-3060SSK-L-X/SSK-R-X	16"x20"x12" (LH or RH)	60"x30"
EPT6R5-3072SSK-L-X/SSK-R-X	16"x20"x12" (LH or RH)	72"x30"



EPT6R5-3060SSK-L-X

PREP TABLES W/SINKS

- 16GA 300 Series Stainless Top w/10" Clip-Down Riser
- (1) 16"x20"x8"
- (1) 16"x20"x4" Bowl
- 4" Deckmount Faucet w/10" Swing Spout (PBF-4DM-10LF-X)
- (1) Roller Bearing Utensil Drawer w/ S/S Removable Liner
- (1) Poly Cutting Board 16"x21"x3/4" Thick
- Stainless Steel Legs & Adj Undershef

MODEL	SINK LOCATION	L X W
EPT6R10-DL2B-72L-X/72R-X	LH or RH	72"x30"
EPT6R10-DL2B-96L-X/96R-X	LH or RH	96"x30"



EPT6R10-DL2B-72L-X

DISHTABLES

FWFSF1022



JDTC-20-60R-X



JDTS-20-60L-X

PRO-BOWL DISHTABLES - 16GA

- 16GA 300 Series Stainless Steel
- 20-7/8" Opening
- Soiled Dishtable Includes An Integrally Welded Bowl 20"x20"x8" with 8" O.C. Faucet Holes
- Stainless Steel Legs & Bracing w/Adj. Stainless Bullet Feet

CLEAN DISHTABLES - STRAIGHT

MODEL	DESCRIPTION	L X W
JDTC-20-26L-X/26R-X	26" Long (LH or RH)	26"x30"
JDTC-20-36L-X/36R-X	36" Long (LH or RH)	36"x30"
JDTC-20-48L-X/48R-X	48" Long (LH or RH)	48"x30"
JDTC-20-60L-X/60R-X	60" Long (LH or RH)	60"x30"
JDTC-20-72L-X/72R-X	72" Long (LH or RH)	72"x30"
JDTC-20-96L-X/96R-X	96" Long (LH or RH)	96"x30"

SOILED DISHTABLES - STRAIGHT - 20"x20"x8" SINK BOWL

MODEL	DESCRIPTION	L X W
JDTS-20-36L-X/36R-X	36" Long (LH or RH)	36"x30"
JDTS-20-48L-X/48R-X	48" Long (LH or RH)	48"x30"
JDTS-20-60L-X/60R-X	60" Long (LH or RH)	60"x30"
JDTS-20-72L-X/72R-X	72" Long (LH or RH)	72"x30"



EDTC8-S30-R60-X



EDTS8-S30-L60-X

DISHTABLES - "E-SERIES" 18GA

- 18GA 300 Series Stainless Steel
- 20-7/8" Opening
- Soiled Dishtable Includes An Integrally Welded Bowl 20"x20"x8" With 8" O.C. Faucet Holes
- Galvanized Legs & Bracing w/Adj. Plastic Bullet Feet

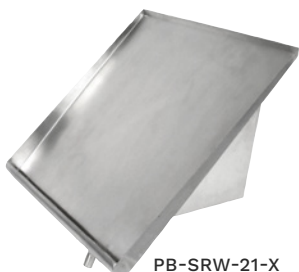
CLEAN DISHTABLES - STRAIGHT

MODEL	DESCRIPTION	L X W
EDTC8-S30-L26-X/R26-X	26" Long (LH or RH)	26"x30"
EDTC8-S30-L36-X/R36-X	36" Long (LH or RH)	36"x30"
EDTC8-S30-L48-X/R48-X	48" Long (LH or RH)	48"x30"
EDTC8-S30-L60-X/R60-X	60" Long (LH or RH)	60"x30"
EDTC8-S30-L72-X/R72-X	72" Long (LH or RH)	72"x30"

SOILED DISHTABLES - STRAIGHT - 20"x20"x8" SINK BOWL

MODEL	DESCRIPTION	L X W
EDTS8-S30-L26-X/R26-X *	26" Long (LH or RH)	26"x30"
EDTS8-S30-L36-X/R36-X	36" Long (LH or RH)	36"x30"
EDTS8-S30-L48-X/R48-X	48" Long (LH or RH)	48"x30"
EDTS8-S30-L60-X/R60-X	60" Long (LH or RH)	60"x30"
EDTS8-S30-L72-X/R72-X	72" Long (LH or RH)	72"x30"

*NOTE: (Indicates 16"x20"x8" Sink Bowl)



PB-SRW-21-X



BHS1822-TS-X

WALL MOUNTED SORTING SHELVES

- 18GA 300 Series Stainless Steel
- Solid Shelf-Drain Tube In Corner

SOLID SORTING SHELVES

MODEL	L X W
PB-SRW-21-X	21"x18"
PB-SRW-42-X	42"x18"
PB-SRW-63-X	63"x18"

TUBULAR SORTING SHELVES

MODEL	L X W
BHS1822-TS-X	22"x18"
BHS1842-TS-X	42"x18"
BHS1863-TS-X	63"x18"

PRO-BOWL UNDERCOUNTER DISHTABLES - 16GA



- 16GA 300 Series Stainless Steel
- Soiled Dish Table Includes An Integrally Welded Bowl 20"x20"x8" With 8" O.C. Faucet Holes
- Available In Left Side or Right Side Sink Bowl Location
- Stainless Steel Legs & Bracing w/Adjustable Stainless Bullet Feet

MODEL	BOWL SIZE (L X W X D)	L X W
JDTS-20-50UCL-X/50UCR-X	20"x20"x8", (LH or RH)	50"x30"
JDTS-20-60UCL-X/60UCR-X	20"x20"x8", (LH or RH)	60"x30"



JDTS-20-60UCL-X

UNDERCOUNTER DISHTABLES - "E-SERIES" 18GA



- 18GA 300 Series Stainless Steel
- Soiled Dish Table Includes An Integrally Welded Bowl 20"x20"x8" With 8" O.C. Faucet Holes
- Available In Left Side or Right Side Sink Bowl Location
- Galvanized Legs & Bracing w/Adjustable Plastic Bullet Feet

MODEL	BOWL SIZE (L X W X D)	L X W
EDTS8-S30-50UCL-X/50UCR-X	20"x20"x8", (LH or RH)	50"x30"
EDTS8-S30-60UCL-X/60UCR-X	20"x20"x8", (LH or RH)	60"x30"



EDTS8-S30-60UCL-X

CLEAN DISHTABLES/POT SINKS "B-SERIES" 16GA



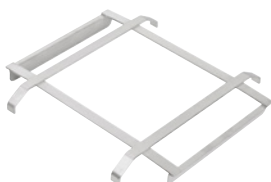
- 16GA 300 Series Stainless Steel Construction
- 18"x24"x14" Deep Sink Bowls
- 3 Rack Slides w/Storage Bracket
- 2 Drain Boards 18" Or 24" Long
- Stainless Steel Legs & Bracing w/Adj. Bracing Front To Back
- 8" O.C. Faucet Holes



DT3B18244-2D18R-X

MODEL	L X W	BOWL SIZE (L X W X D)	DRAIN BOARD	DISH MACHINE OPENING
DT3B18244-2D18L-X	91-1/2"x30"	18"x24"x14" (NSF CERTIFIED)	18" LH & RH	RH
DT3B18244-2D18R-X	91-1/2"x30"	18"x24"x14" (NSF CERTIFIED)	18" LH & RH	LH
DT3B18244-2D24L-X	103"x30"	18"x24"x14" (CSA & NSF CERTIFIED)	24" LH & RH	RH
DT3B18244-2D24R-X	103"x30"	18"x24"x14" (CSA & NSF CERTIFIED)	24" LH & RH	LH
DT3B244-2D24L-X	121-1/2"x30"	24"x24"x14" (CSA & NSF CERTIFIED)	24" LH & RH	RH
DT3B244-2D24R-X	121-1/2"x30"	24"x24"x14" (CSA & NSF CERTIFIED)	24" LH & RH	LH

DISHTABLE RACK SLIDE



MODEL
PB-DTS-20RS-X

PRE-RINSE BASKET



MODEL
PB-DTA-20-01-X

DISH SORTING TABLES

FWFSF1022

DISH SORTING TABLES

- 16GA 300 Series Stainless Steel Top
- Available In Flat Top or 10" Rear Riser
- Available In Fixed Stainless Steel Shelf or Bracing
- 2-1/4" Raised Edge
- Standard 1/2" MPT Drain
- Includes 1/2" FPT Ball Valve
- Ships Welded Setup



INCLUDES 1/2" FPT BALL VALVE



DST6-3049SSW-X

FLAT TOP WITH 2-1/4" RAISED EDGE STAINLESS STEEL LEGS & FIXED UNDERSHELF

L X W	WITH BULLET FEET	WITH 5" LOCKING CASTERS
37"x30"	DST6-3037SSW-X	DST6-3037SSW-C-X
49"x30"	DST6-3049SSW-X	DST6-3049SSW-C-X
61"x30"	DST6-3061SSW-X	DST6-3061SSW-C-X
73"x30"	DST6-3073SSW-X	DST6-3073SSW-C-X
85"x30"	DST6-3085SSW-X	DST6-3085SSW-C-X
97"x30"	DST6-3097SSW-X	DST6-3097SSW-C-X



DST6-3049SBW-C-X

FLAT TOP WITH 2-1/4" RAISED EDGE STAINLESS STEEL LEGS & FIXED BRACING

L X W	WITH BULLET FEET	WITH 5" LOCKING CASTERS
37"x30"	DST6-3037SBW-X	DST6-3037SBW-C-X
49"x30"	DST6-3049SBW-X	DST6-3049SBW-C-X
61"x30"	DST6-3061SBW-X	DST6-3061SBW-C-X
73"x30"	DST6-3073SBW-X	DST6-3073SBW-C-X
85"x30"	DST6-3085SBW-X	DST6-3085SBW-C-X
97"x30"	DST6-3097SBW-X	DST6-3097SBW-C-X



DST6R10-3049SSW-X

10" REAR RISER TOP WITH 2-1/4" RAISED EDGE STAINLESS STEEL LEGS & FIXED UNDERSHELF

L X W	WITH BULLET FEET
37"x30"	DST6R10-3037SSW-X
49"x30"	DST6R10-3049SSW-X
61"x30"	DST6R10-3061SSW-X
73"x30"	DST6R10-3073SSW-X
85"x30"	DST6R10-3085SSW-X
97"x30"	DST6R10-3097SSW-X



DST6R10-3049SBW-X

10" REAR RISER TOP WITH 2-1/4" RAISED EDGE STAINLESS STEEL LEGS & FIXED BRACING

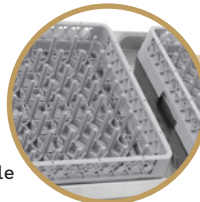
L X W	WITH BULLET FEET
37"x30"	DST6R10-3037SBW-X
49"x30"	DST6R10-3049SBW-X
61"x30"	DST6R10-3061SBW-X
73"x30"	DST6R10-3073SBW-X
85"x30"	DST6R10-3085SBW-X
97"x30"	DST6R10-3097SBW-X

MOBILE BUSSING TABLE / MULTI-STATION HAND WASH

FWFSF1022

MOBILE BUSSING TABLE

- 16GA Type 300 Stainless Steel Top With Marine Edge
- Reinforced With 1"x2" Channel Running Entire Length Of Table
- 1-1/2" Stallion Edge, Straight Turndown On Sides
- 16GA Slanted Sorting Shelf With Weep Hole
- Stainless Steel Base With Fixed Mid-Shelf And Adjustable 18GA Undershelf
- Heavy Duty 5" Locking Casters
- Includes Scrap Hole



SLANTED SORTING SHELF FOR GLASS RACKS



BT6-3063SSK-X

***NOTE: Does NOT Include Bus Tubs or 16GAL Slim Jim Trash**

MODEL	L X W
BT6-3042SSK-X	42"x30"
BT6-3063SSK-X	63"x30"

MULTI-STATION HAND WASH SINK

- 16GA Type 300 Stainless Steel With #4 Polish
- 5" Deep Bowls
- Bottom Of Bowls Formed For Drainage To 3-1/2" Diameter Die Stamped Opening
- 7" High Backsplash
- Single 1" or 4" On-Center Faucet Holes In Backsplash
- ADA Compliant

***NOTE: For Faucet Information Visit PG. 31**

MULTI-STATION HAND WASH SINK - WITH LEGS

MODEL	BOWL SIZE (W X D X H)	DESCRIPTION
PBMSSH-F1-4020-X	40"x19-5/8"x5"	(2) Single 1" Faucet Holes
PBMSSH-F2-4020-X	40"x19-5/8"x5"	2 Sets Of 4" O.C. Faucet Holes
PBMSSH-F1-6020-X	60"x19-5/8"x5"	(3) Single 1" Faucet Holes
PBMSSH-F2-6020-X	60"x19-5/8"x5"	3 Sets Of 4" O.C. Faucet Holes
PBMSSH-F1-8020-X	80"x19-5/8"x5"	(4) Single 1" Faucet Holes
PBMSSH-F2-8020-X	80"x19-5/8"x5"	4 Sets Of 4" O.C. Faucet Holes
PBMSSH-F1-10020-X	100"x19-5/8"x5"	(5) Single 1" Faucet Holes
PBMSSH-F2-10020-X	100"x19-5/8"x5"	5 Sets Of 4" O.C. Faucet Holes



PBMSSH-F2-6020-X

MULTI-STATION HAND WASH SINK - WALL MOUNT

MODEL	BOWL SIZE (W X D X H)	DESCRIPTION
PBMSSH-W1-4020-X	40"x19-5/8"x5"	(2) Single 1" Faucet Holes
PBMSSH-W2-4020-X	40"x19-5/8"x5"	2 Sets Of 4" O.C. Faucet Holes
PBMSSH-W1-6020-X	60"x19-5/8"x5"	(3) Single 1" Faucet Holes
PBMSSH-W2-6020-X	60"x19-5/8"x5"	3 Sets Of 4" O.C. Faucet Holes
PBMSSH-W1-8020-X	80"x19-5/8"x5"	(4) Single 1" Faucet Holes
PBMSSH-W2-8020-X	80"x19-5/8"x5"	4 Sets Of 4" O.C. Faucet Holes
PBMSSH-W1-10020-X	100"x19-5/8"x5"	(5) Single 1" Faucet Holes
PBMSSH-W2-10020-X	100"x19-5/8"x5"	5 Sets Of 4" O.C. Faucet Holes



PBMSSH-W2-6020-X

PRO-BOWL HAND SINKS



FWFSF1022

PRO-BOWL HAND SINKS



ALSO AVAILABLE WITH SIDE SPLASH



MODEL	BOWL SIZE (L X W X D)	FAUCET LOCATION	SIDE SPLASH
A. PBHS-W-1410-KV2MB-X	14"x10"x5" (1-7/8" Drain)	Splash Mount - 1 Hole Centered (Goose Neck Spout And Knee Valves Included.)	N/A
PBHS-W-1410-KV2MB-SS-X	14"x10"x5" (1-7/8" Drain)	Splash Mount - 1 Hole Centered (Goose Neck Spout And Knee Valves Included.)	LH & RH
B. PB-TD-0909-X	N/A	Wall Mount Towel Dispenser For 9"x9" Hand Sink	N/A
C. PBHS-W-0909-X	9"x9"x5" (1-7/8" Drain)	Splash Mount - 4" On-Center	N/A
PBHS-W-0909-P-X	9"x9"x5" (1-7/8" Drain)	Splash Mount - 4" On-Center (Goose Neck Faucet Included.)	N/A
D. PBHS-W-0909-SSLR-X	9"x9"x5" (1-7/8" Drain)	Splash Mount - 4" On-Center	LH & RH
PBHS-W-0909-P-SSLR-X	9"x9"x5" (1-7/8" Drain)	Splash Mount - 4" On-Center (Goose Neck Faucet Included.)	LH & RH
E. PBHS-W-0909-TD-SSLR-X	9"x9"x5" (2" Drain)	Towel Dispenser Deck Mount - 4" On-Center	LH & RH



MODEL	BOWL SIZE (L X W X D)	FAUCET LOCATION	SIDE SPLASH
F. PBHS-W-1410-X	14"x10"x5" (1-7/8" Drain)	Splash Mount - 4" On-Center	N/A
G. PBHS-W-1410-P-X	14"x10"x5" (1-7/8" Drain)	Splash Mount - 4" On-Center (Faucet Included)	N/A
H. PBHS-W-1410-SSL-X	14"x10"x5" (1-7/8" Drain)	Splash Mount - 4" On-Center	LH
I. PBHS-W-1410-SSR-X	14"x10"x5" (1-7/8" Drain)	Splash Mount - 4" On-Center	RH



MODEL	BOWL SIZE (L X W X D)	FAUCET LOCATION	SIDE SPLASH
J. PBHS-W-1410-SSLR-X	14"x10"x5" (1-7/8" Drain)	Splash Mount - 4" On-Center	LH & RH
K. PBHS-W-1410-1-X	14"x10"x5" (1-7/8" Drain)	Splash Mount - 1 Hole Centered	N/A
L. PBHS-W-1410-1-SSLR-X	14"x10"x5" (1-7/8" Drain)	Splash Mount - 1 Hole Centered	LH & RH
M. PBHS-W-1410-P-SSLR-X	14"x10"x5" (1-7/8" Drain)	Splash Mount - 4" On-Center (Faucet Included)	LH & RH



PRO-BOWL HAND SINKS

FWFSF1022

PRO-BOWL HAND SINKS



N.



O.



P.



Q.

MODEL	BOWL SIZE (L X W X D)	FAUCET LOCATION	SIDE SPLASH
N. PBHS-W-1410-4D-X	14"x10"x5" (3-1/2" Drain)	Splash Mount - 4" On-Center	N/A
PBHS-W-1410-1DM-X	14"x10"x5"	Deck Mount 1 Hole Centered	N/A
PBHS-W-1410-1DM-SSLR-X	14"x10"x5"	Deck Mount 1 Hole Centered	LH & RH
O. PBHS-W-1410-2DM-X	14"x10"x5"	Deck Mount - 4" On-Center	N/A
P. PBHS-W-1410-2DM-SSLR-X	14"x10"x5"	Deck Mount - 4" On-Center	LH & RH
Q. PB-STD-1410-X	N/A	Wall Mount Soap & Towel Dispenser Only. For 14x10 Hand Sink. Includes Soap Dispenser.	N/A



R.



S.



T.



U.



V.

CSA CERTIFIED ONLY



NO CERTIFICATION

MODEL	BOWL SIZE (L X W X D)	FAUCET LOCATION	SIDE SPLASH
R. PBHS-ADA-P-STD-X (CSA Certified Only)	14"x16"x5" (1-7/8" Drain)	Splash Mount - 4" On-Center, CSA CERT, (Removable Front Panel. Goose Neck Faucet, Soap & Paper Towel Dispenser Included.)	N/A
S. PBHS-ADA-P-STD-SSLR-X (No Certification)	14"x16"x5" (1-7/8" Drain)	Splash Mount - 4" On-Center	LH & RH
T. PBHS-W-1416ADAS-X	14"x16"x5" (1-7/8" Drain)	Splash Mount 4" On-Center	N/A
U. PBHS-W-1616-X	16"x16"x10" (3-1/2" Drain)	Deck Mount 1 Hole Centered	N/A
V. PBHS-W-1616-SSLR-X	16"x16"x10" (3-1/2" Drain)	Deck Mount 1 Hole Centered	LH & RH

HAND SINK SIDE SPLASH KIT

- 18GA Type 300 Stainless Steel
- Side Splash Each Sold Separately
- Includes Installation Hardware



MODEL	DESCRIPTION	SIZE (L X H)
PB-HSS-99L-X/99R-X	LH or RH	14-1/2"x10"
PB-HSS1410L-X/1410R-X	LH or RH - SM Faucet	15-1/2"x10"
PB-HSSD1410L-X/1410R-X	LH or RH - DM Faucet	17"x10"

PEDESTAL HAND SINK



- 16GA Type 300 Stainless Steel
- Drain Size: 3-1/2"
- Removable Access Panel On Right Side
- Mounts Securely To The Floor
- Includes Foot Valve and Gooseneck Faucet (PBF-FV2-SM-35GLF-X)



PBF-FV2-SM-35GLF



PBHS-F-1410-X

MODEL	BOWL SIZE (L X W X D)
PBHS-F-1410-X	14"x10"x5"

MOBILE HAND WASH STATIONS

FWFSF1022



MOBILE HAND WASH STATION FLAT TOP WITHOUT SIDE SPLASHES

- 16GA Stainless Steel Flat Top
- 18GA Stainless Steel Panels
- 20GA Stainless Steel Hinged Door w/Magnetic Catches
- Drop-In Sink (10"x14"x5")
- Deck Mount Faucet 4" O.C.
- Soap and Paper Towel Dispenser
- Heavy Duty 5" Locking Casters
- Fresh Water Pump
- 2.5 GAL Water Heater
- 5 GAL Clean Water Container
- 6 GAL Grey Water Container
- GFI Outlet With 6' Cord
- All Components are UL Listed

MODEL	SINK BOWL SIZE (L X W X H)	L X W	OVERALL WORK HEIGHT
MHS-F-2624-X	10"x14"x5"	26"x24"	36"



HANDS-FREE MOBILE HAND WASH STATION WITH ELECTRIC FOOT SWITCH

- 16GA Stainless Steel Flat Top
- 18GA Stainless Steel Panels
- 20GA Stainless Steel Hinged Door w/Magnetic Catches
- Electric Foot Switch For Hands-Free Operation
- Low Flow Aerator
- Drop-In Sink (10"x14"x5")
- 5" Deck Mount Gooseneck Spout
- Soap and Paper Towel Dispenser
- Heavy Duty 5" Locking Casters
- Fresh Water Pump
- 2.5 GAL Water Heater
- 5 GAL Clean Water Container
- 6 GAL Grey Water Container
- GFI Outlet With 6' Cord
- All Components are UL Listed

MODEL	SINK BOWL SIZE (L X W X H)	L X W	OVERALL WORK HEIGHT
MHS-F-2624-FS-X	10"x14"x5"	26"x24"	36"



VIDEO ONLINE AT [YOUTUBE.COM/JOHNBOOSCO](https://www.youtube.com/JohnBoosco)

MOBILE HAND WASH STATION

- 16GA Stainless Steel Top
- 18GA Stainless Steel Panels
- 20GA Stainless Steel Hinged Door w/Magnetic Catches
- Marine Inverted "V" Front Edge
- 8" Rear Risers & Side Splashes
- Drop-In Sink
- Deck Mount Faucet 4" O.C.
- Soap and Paper Towel Dispenser
- Heavy Duty 5" Locking Casters
- Fresh Water Pump
- 2.5 GAL Water Heater
- CPS 5 GAL Clean Water Container
- CPS 6 GAL Grey Water Container
- GFI Outlet With 6 Foot Cord
- All Components are UL Listed

MODEL	SINK BOWL SIZE (L X W X H)	L X W	OVERALL WORK HEIGHT
MHS-2624-X	10"x14"x5"	26"x24"	36"



3-COMPARTMENT MOBILE SINK

- 16GA Type 300 Stainless Steel Top With #4 Polish, Satin Finish
- 18GA Stainless Steel Panels
- 18GA Stainless Steel Hinged Doors With Magnetic Catches
- Marine Edge On Front
- 16GA 6" Rear Risers And Side Splashes
- (3) Weld In Sink Bowls 10"x14"x5"
- Side Mount Hand Sink With Weld In Sink Bowl 10"x14"x5"
- (2) Heavy Duty 10" Swing Spout Deck Mount Faucets, 4" O.C.
- Heavy Duty 5" Locking Casters
- (2) Water Supply Options: 20 GAL Clean Tank Or Constant Supply City Water
- Fresh Water Pump
- 2.5 GAL Water Heater
- 20 GAL Clean Water Tank
- 30 GAL Waste Water Tank
- Soap And Towel Dispenser
- GFI With 6' Cord
- All Components Are UL Listed

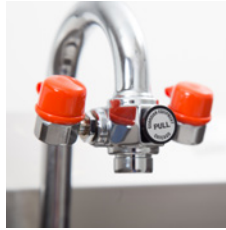
MODEL	DIMENSIONS (L X W X H)	SINK SIZE (L X W X H)
MCS3-1014-HS-X	75"x28"x43-13/16"	10"x14"x5"



HAND SINK WITH EYE WASH



- Type 300 Stainless Steel
- Deep Drawn Bowl: 14"x10"x5"
- Drain Size: 1-7/8"
- Includes Eye Wash Attachment
- Knee Activated Faucet With Hinged Front Apron



EYE WASH ATTACHMENT



KNEE ACTIVATED FAUCET WITH HINGED FRONT APRON



PBHS-W-1410-KV1APS-EW-SS-X

MODEL	SINK SIZE (L X W X D)	FAUCET LOCATION	SIDE SPLASH
PBHS-W-1410-KV1APS-EW-X	17"x15-1/2"x22"	Splash Mount - 1 Hole Centered	N/A
PBHS-W-1410-KV1APS-EW-SS-X	17"x15-1/2"x22"	Splash Mount - 1 Hole Centered	LH & RH

EYE WASH DISCLAIMER IMPORTANT: Faucet-mounted eyewash requires two motions to operate (turn on water, pull knob to activate eyewash flow). Therefore, John Boos does not believe that these units meet the provisions of ANSI Z358.1-2014 as eyewash units. These units are intended solely as supplemental units in addition to dedicated, plumbed eyewash equipment installed in the workplace. Faucet-mounted eyewashes should be used with cold or warm water only. Use of hot water might cause scalding. Eyewash attachment not to be used with electronic faucets.

HAND SINK WITH KNEE ACTIVATED FAUCET WITH HINGED FRONT APRON



- Type 300 Stainless Steel
- Deep Drawn Bowl: 14"x10"x5"
- Drain Size: 1-7/8"
- Knee Activated Faucet With Hinged Front Apron



KNEE ACTIVATED FAUCET WITH HINGED FRONT APRON



MODEL	SINK SIZE (L X W X D)	FAUCET LOCATION	SIDE SPLASH
PBHS-W-1410-KV1APS-X	17"x15-1/2"x22"	Splash Mount - 1 Hole Centered	N/A
PBHS-W-1410-KV1APS-SS-X	17"x15-1/2"x22"	Splash Mount - 1 Hole Centered	LH & RH

PRO-BOWL HAND SINKS W/KNEE ACTIVATED FAUCET

- Type 300 Stainless Steel
- 14"x10"x5" With 1 Knee Valve or 9"x9"x5" Sink With 2 Knee Valves
- Drain Size: 1-7/8"
- Knee Activated Faucet

MODEL	BOWL SIZE (L X W X D)	DESCRIPTION	SIDE SPLASH
PBHS-W-1410-KV1MB-X	14"x10"x5"	Splash Mount - 1 Hole Centered, Goose Neck Faucet w/(1) Knee Valve	N/A
PBHS-W-1410-KV1MB-SS-X	14"x10"x5"	Splash Mount - 1 Hole Centered, Goose Neck Faucet w/(1) Knee Valve	LH & RH
PBHS-W-0909-KV2MB-X	9"x9"x5"	Splash Mount - 1 Hole Centered, Goose Neck Faucet w/(2) Knee Valves	N/A
PBHS-W-0909-KV2MB-SS-X	9"x9"x5"	Splash Mount - 1 Hole Centered, Goose Neck Faucet w/(2) Knee Valves	LH & RH



PBHS-W-0909-KV2MB-SS-X

WALL MOUNT SIDE SPLASH

- 18GA Type 300 Stainless Steel
- Side Splash Each Sold Separately



MODEL	DESCRIPTION	SIZE (L X H)
WMSG-2424-X	LH or RH	24"x24"

LEVER DRAINS



MODEL	DESCRIPTION
PB-LWR-1-X	Twist, 3.5" Drain Opening, 2" Outlet
PB-LWS-1-X	Straight, 3.5" Drain Opening, 2" Outlet

PRO-BOWL DROP-IN HAND SINKS



FWFSF1022



DROP-IN HAND SINKS

1 BOWL

	MODEL	BOWL SIZE (L X W X D)	SINK SIZE (L X W X D)	CERTIFICATION/DESCRIPTION	SIDE SPLASH
M.	PB-DISINK090905-X	9"x9"x5"	12"x14"x5"	NSF® COMPONENT	N/A
	PB-DISINK090905-SSLR-X	9"x9"x5"	12"x14"x5"	NSF® COMPONENT	LH & RH
N.	PB-DISINK151506-X	12-1/2"x10-1/2"x6"	15"x15"x6"	NSF® COMPONENT	N/A
O.	PB-DISINK101405-X	10"x14"x5"	12-1/4"x18"x5"	NSF® COMPONENT, CSA®	N/A
P.	PB-DISINK101410-X	10"x14"x10"	12-1/4"x18"x10"	NSF® COMPONENT, CSA®	N/A
Q.	PB-DISINK101405-P-SSLR-X	10"x14"x5"	12-1/2"x18-3/4"x10"	NSF® COMPONENT, CSA® (Faucet Included: PBF-4-DLF)	LH & RH
R.	PB-DISINK101410-P-SSLR-X	10"x14"x10"	12-1/2"x18-3/4"x10"	NSF® COMPONENT, CSA® (Faucet Included: PBF-4-DLF)	LH & RH
S.	PB-DISINK201608-X	20"x16"x8"	23-5/8"x21-5/8"x8"	NSF® COMPONENT	N/A
T.	PB-DISINK201612-X	20"x16"x12"	23-5/8"x21-5/8"x12"	NSF® COMPONENT	N/A
U.	PB-DISINK282012-X	28"x20"x12"	31-5/8"x25-5/8"x12"	NSF® COMPONENT	N/A
V.	PB-DISINK091106-TD-X	9"x11"x6"	16-1/2"x17-1/2"x17"	N/A (TOWEL DISPENSER)	LH & RH
W.	PB-DISINK091106-STD-X	9"x11"x6"	16-1/2"x17-1/2"x17"	N/A (SOAP & TOWEL DISPENSER)	LH & RH

2 BOWL

	MODEL	BOWL SIZE (L X W X D)	SINK SIZE (L X W X D)	CERTIFICATION/DESCRIPTION	SIDE SPLASH
X.	PB-DISINK101410-2-X	2-10"x14"x10"	24"x18"x10"	NSF® COMPONENT, CSA®	N/A
	PB-DISINK141610-2-X	2-14"x16"x10"	33"x22"x10"	NSF® COMPONENT	N/A
	PB-DISINK201612-2-X	2-20"x16"x12"	45"x22"x12"	NSF® COMPONENT	N/A

3 BOWL

	MODEL	BOWL SIZE (L X W X D)	SINK SIZE (L X W X D)	CERTIFICATION/DESCRIPTION	SIDE SPLASH
Y.	PB-DISINK101410-3-X	3-10"x14"x10"	36"x18"x10"	NSF® COMPONENT, CSA®	N/A
Z.	PB-DISINK162012-3-X *	3-16"x20"x12"	54"x24"x12"	NSF® COMPONENT	N/A

*NOTE: (Supplied with 2 Sets of Faucet Holes)

HEAVY DUTY FAUCETS

MODEL	ON-CENTER	DESCRIPTION	SPOUT
A. PBF-8-SLF-X	8"	Splash Mount	8" Swing
PBF-10-SLF-X	8"	Splash Mount	10" Swing
PBF-12-SLF-X	8"	Splash Mount	12" Swing
PBF-14-SLF-X	8"	Splash Mount	14" Swing
B. PBF-18-DJSLF-X	8"	Splash Mount	18" Swing - Double
PBF-4SM-3MGLF-X	4"	Splash Mount	3" Gooseneck
C. PBF-4SM-3GLF-X	4"	Splash Mount	3.5" Gooseneck
PBF-4SM-5GLF-X	4"	Splash Mount	5" Gooseneck
D. PBF-4DM-3GLF-X	4"	Deck Mount	3.5" Gooseneck
PBF-4DM-5GLF-X	4"	Deck Mount	5" Gooseneck
PBF-4DM-6LF-X	4"	Deck Mount	6" Swing
PBF-4DM-10LF-X	4"	Deck Mount	10" Swing
PBF-4DM-12LF-X	4"	Deck Mount	12" Swing

ECONOMY FAUCETS

MODEL	ON-CENTER	DESCRIPTION	SPOUT
PBF-4-S-LF-X	4"	Splash Mount	3.5" Gooseneck
E. PBF-4-S-6LF-X	4"	Splash Mount	6" Swing
F. PBF-4-D-LF-X	4"	Deck Mount	3.5" Gooseneck
PBF-4-D-10LF-X	4"	Deck Mount	10" Swing

HEAVY DUTY SHALLOW MOUNT FAUCETS

MODEL	ON-CENTER	DESCRIPTION	SPOUT
G. PBF-4SM2-6LF-X	4"	Shallow Splash Mount	6" Swing
PBF-4SM2-8LF-X	4"	Shallow Splash Mount	8" Swing
PBF-4SM2-10LF-X	4"	Shallow Splash Mount	10" Swing
H. PBF-4SM2-3GLF-X	4"	Shallow Splash Mount	3.5" Gooseneck
PBF-4SM2-5GLF-X	4"	Shallow Splash Mount	5" Gooseneck

ECONOMY SHALLOW MOUNT FAUCETS

MODEL	ON-CENTER	DESCRIPTION	SPOUT
I. PBF-W2-6LF-X	4"	Shallow Splash Mount	6" Swing
PBF-W2-8LF-X	4"	Shallow Splash Mount	8" Swing
PBF-W2-10LF-X	4"	Shallow Splash Mount	10" Swing
J. PBF-W2-3GLF-X	4"	Shallow Splash Mount	3.5" Gooseneck

PRE-RINSE UNIT

MODEL	ON-CENTER	DESCRIPTION	SPOUT
K. PB-PRW-1LF-X	8"	Splash Mount	Pre-Rinse Unit

ADD-ON FAUCET

MODEL	SPOUT
L. PB-AD-8LF-X	8" Swing Add-On
PB-AD-10LF-X	10" Swing Add-On
PB-AD-12LF-X	12" Swing Add-On
PB-AD-14LF-X	14" Swing Add-On

FLEXIBLE WATER LINE CONNECTORS - SHALLOW MOUNT FAUCETS

MODEL	DESCRIPTION
M. PB-WL-36-X	(2) Hoses Per Kit, (1) Red, (1) Blue

HANDS-FREE FAUCET WITH ELECTRIC SENSOR

MODEL	DESCRIPTION	SPOUT
N. PBF-SEF3GLF-X	Splash Mount With Electric Sensor	3" Gooseneck

MANUAL TEMPERATURE MIXING VALVE WITH BUILT-IN CHECK VALVES

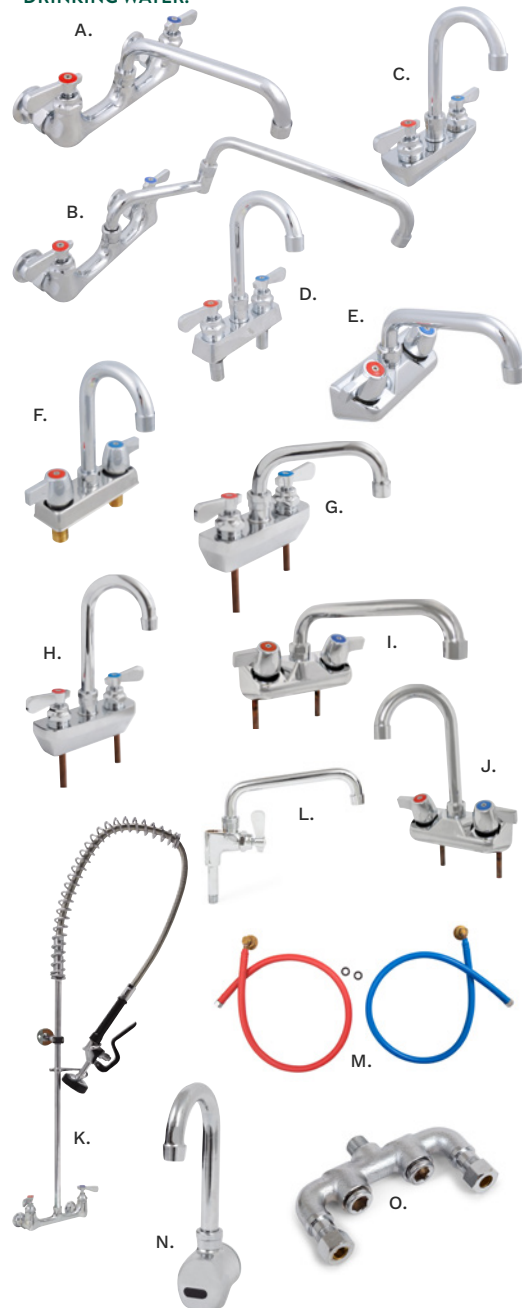
MODEL	DESCRIPTION
O. PB-MV-X	Manual Temperature Mixing Valve w/Built-In Check Valves

LOW-LEAD FAUCETS



- 1/4" Turn Ceramic Cartridges
- Color Coded Hot & Cold Indicators
- Double O-Ring Spout Seal
- High Polished Nickel Chrome Finish

ENVIRONMENTALLY FRIENDLY! LESS THAN .25% LEAD WITHIN BRASS ALLOY CONTENT FOR HEALTHIER DRINKING WATER.



S/S WRIST BLADES



MODEL	DESCRIPTION
PB-WR-X	1 Pair, Use w/Heavy Duty Faucets Only

STALLION WORK TABLES W/STAINLESS SHELF

FWFSF1022

STALLION WORK TABLES W/STAINLESS STEEL LOWER SHELF



- 16GA 300 Series Stainless Steel Top, Flat Top
- Stallion Edge, Straight Turndown on Sides
- 18GA Stainless Steel Adjustable Lower Shelf
- Stainless Steel Legs And Adj Metal Bullet Feet
- Shipped Knocked-Down, Easy-To-Assemble

ASSEMBLY VIDEO ONLINE AT [YOUTUBE.COM/JOHNBOOSCO](https://www.youtube.com/JOHNBOOSCO)



ST6-3048SSK-X

LENGTH	24" WIDTH	30" WIDTH	36" WIDTH
30"	ST6-2430SSK-X	ST6-3030SSK-X	ST6-3630SSK-X
36"	ST6-2436SSK-X	ST6-3036SSK-X	-
48"	ST6-2448SSK-X	ST6-3048SSK-X	ST6-3648SSK-X
60"	ST6-2460SSK-X	ST6-3060SSK-X	ST6-3660SSK-X
72"	ST6-2472SSK-X	ST6-3072SSK-X	ST6-3672SSK-X
84"	ST6-2484SSK-X	ST6-3084SSK-X	ST6-3684SSK-X
96"	ST6-2496SSK-X	ST6-3096SSK-X	ST6-3696SSK-X
108"	ST6-24108SSK-X	ST6-30108SSK-X	-
120"	ST6-24120SSK-X	ST6-30120SSK-X	-

STALLION WORK TABLES W/5" RISER & STAINLESS SHELF



- 16GA 300 Series Stainless Steel Top
- 5" High 1.5" Deep Clip-Down Riser
- Stallion Edge, Straight Turndown on Sides
- 18GA Stainless Steel Adjustable Lower Shelf
- Stainless Steel Legs And Adj Metal Bullet Feet
- Shipped Knocked-Down, Easy-To-Assemble

ASSEMBLY VIDEO ONLINE AT [YOUTUBE.COM/JOHNBOOSCO](https://www.youtube.com/JOHNBOOSCO)



ST6R5-3048SSK-X

LENGTH	24" WIDE	30" WIDE
24"	-	ST6R5-3024SSK-X
30"	ST6R5-2430SSK-X	ST6R5-3030SSK-X
36"	ST6R5-2436SSK-X	ST6R5-3036SSK-X
48"	ST6R5-2448SSK-X	ST6R5-3048SSK-X
60"	ST6R5-2460SSK-X	ST6R5-3060SSK-X
72"	ST6R5-2472SSK-X	ST6R5-3072SSK-X
84"	ST6R5-2484SSK-X	ST6R5-3084SSK-X
96"	ST6R5-2496SSK-X	ST6R5-3096SSK-X
108"	ST6R5-24108SSK-X	ST6R5-30108SSK-X
120"	ST6R5-24120SSK-X	ST6R5-30120SSK-X

STAINLESS STEEL DRAWERS

- 15"x20"x5"
- Stainless Steel Front Drawer And Pan
- Available In Poly Friction Slides or Stainless Steel Roller Bearings



DP2015-S30-X



DR2015-S30-X

POLY FRICTION SLIDES

MODEL	DESCRIPTION
DP2015-S24-X	24" Wide Stainless Tables Only
DP2015-S30-X	30" Wide Stainless Tables Only
DP2015-S36-X	36" Wide Stainless Tables Only
DP2015-W-X	Wood Top Tables Only - Any Size

STAINLESS STEEL ROLLER BEARINGS

MODEL	DESCRIPTION
DR2015-S24-X	24" Wide Stainless Tables Only
DR2015-S30-X	30" Wide Stainless Tables Only
DR2015-S36-X	36" Wide Stainless Tables Only
DR2015-W-X	Wood Top Tables Only - Any Size

STALLION WORK TABLES W/GALVANIZED SHELF

FWFSF1022

STALLION WORK TABLES W/GALVANIZED LOWER SHELF



- 16GA 300 Series Stainless Steel, Flat Top
- Stallion Edge, Straight Turndown on Sides
- 18GA Galvanized Adjustable Lower Shelf
- Galvanized Legs And Adj Metal Bullet Feet
- Shipped Knocked-Down, Easy-To-Assemble

ASSEMBLY VIDEO ONLINE AT
[YOUTUBE.COM/JOHNBOOSCO](https://www.youtube.com/JOHNBOOSCO)



ST6-3048GSK-X

LENGTH	24" WIDTH	30" WIDTH	36" WIDTH
30"	ST6-2430GSK-X	ST6-3030GSK-X	-
36"	ST6-2436GSK-X	ST6-3036GSK-X	-
48"	ST6-2448GSK-X	ST6-3048GSK-X	ST6-3648GSK-X
60"	ST6-2460GSK-X	ST6-3060GSK-X	ST6-3660GSK-X
72"	ST6-2472GSK-X	ST6-3072GSK-X	ST6-3672GSK-X
84"	ST6-2484GSK-X	ST6-3084GSK-X	ST6-3684GSK-X
96"	ST6-2496GSK-X	ST6-3096GSK-X	ST6-3696GSK-X
108"	ST6-24108GSK-X	ST6-30108GSK-X	-
120"	ST6-24120GSK-X	ST6-30120GSK-X	-

STALLION WORK TABLES W/5" RISER & GALVANIZED LOWER SHELF



- 16GA 300 Series Stainless Steel
- 5" High 1.5" Deep Clip-Down Riser
- Stallion Edge, Straight Turndown on Sides
- 18GA Galvanized Adjustable Lower Shelf
- Galvanized Legs And Adj Metal Bullet Feet
- Shipped Knocked-Down, Easy-To-Assemble

ASSEMBLY VIDEO ONLINE AT
[YOUTUBE.COM/JOHNBOOSCO](https://www.youtube.com/JOHNBOOSCO)



ST6R5-3048GSK-X

LENGTH	24" WIDTH	30" WIDTH
24"	-	ST6R5-3024GSK-X
30"	ST6R5-2430GSK-X	ST6R5-3030GSK-X
36"	ST6R5-2436GSK-X	ST6R5-3036GSK-X
48"	ST6R5-2448GSK-X	ST6R5-3048GSK-X
60"	ST6R5-2460GSK-X	ST6R5-3060GSK-X
72"	ST6R5-2472GSK-X	ST6R5-3072GSK-X
84"	ST6R5-2484GSK-X	ST6R5-3084GSK-X
96"	ST6R5-2496GSK-X	ST6R5-3096GSK-X
108"	ST6R5-24108GSK-X	ST6R5-30108GSK-X
120"	ST6R5-24120GSK-X	ST6R5-30120GSK-X

OPTIONAL STAINLESS STEEL LEGS WITH 5" LOCKING CASTERS

- Finished Working Height Of 35-3/4"
- For Adding Casters To Existing Work Tables In Field.

MODEL	DESCRIPTION
SLEG-34.75C-4-X	Set of 4
SLEG-34.75C-6-X	Set of 6

SELF CLOSING STAINLESS STEEL DRAWERS

- 20"x20"x5"
- Self Closing Drawer
- Stainless Steel Front Drawer And Pan



MODEL	DESCRIPTION
DR2020SC-S30-X	30" Wide Stainless Tables Only
DR2020SC-S36-X	36" Wide Stainless Tables Only
DR2020SC-W-X	Wood Top Tables Only - Any Size

REPLACEMENT CASTERS

- 5" Heavy Duty Locking Casters For Round Legs
- *NOTE: If "ST" Work Tables Are Ordered With Casters CAS01-R or CAS02-R, table legs will be precut to allow a finished working height of 35-3/4". (Available For "ST" Tables Only.)



MODEL	DESCRIPTION
CAS01-R-X	Set of 4
CAS02-R-X	Set of 6

STALLION WORK TABLES W/STAINLESS BRACING

FWFSF1022

STALLION WORK TABLES W/STAINLESS STEEL BRACING



- 16GA 300 Series Stainless Steel, Flat Top
- Stallion Edge, Straight Turndown on Sides
- Stainless Steel Legs And Bracing
- Adjustable Metal Bullet Feet
- Shipped Knocked-Down, Easy-To-Assemble



ST6-3048SBK-X

LENGTH	24" WIDTH	30" WIDTH	36" WIDTH
30"	ST6-2430SBK-X	ST6-3030SBK-X	-
36"	ST6-2436SBK-X	ST6-3036SBK-X	-
48"	ST6-2448SBK-X	ST6-3048SBK-X	ST6-3648SBK-X
60"	ST6-2460SBK-X	ST6-3060SBK-X	ST6-3660SBK-X
72"	ST6-2472SBK-X	ST6-3072SBK-X	ST6-3672SBK-X
84"	ST6-2484SBK-X	ST6-3084SBK-X	ST6-3684SBK-X
96"	ST6-2496SBK-X	ST6-3096SBK-X	ST6-3696SBK-X
108"	ST6-24108SBK-X	ST6-30108SBK-X	-
120"	ST6-24120SBK-X	ST6-30120SBK-X	-

STALLION WORK TABLES W/5" RISER & STAINLESS BRACING



- 16GA 300 Series Stainless Steel
- Available In Flat Top or 5" High 1.5" Deep Clip-Down Riser
- Stallion Edge, Straight Turndown on Sides
- Stainless Steel Legs And Bracing w/ Metal Bullet Feet
- Shipped Knocked-Down, Easy-To-Assemble



ST6R5-3048SBK-X

LENGTH	24" WIDE	30" WIDE
24"	-	ST6R5-3024SBK-X
30"	ST6R5-2430SBK-X	ST6R5-3030SBK-X
36"	ST6R5-2436SBK-X	ST6R5-3036SBK-X
48"	ST6R5-2448SBK-X	ST6R5-3048SBK-X
60"	ST6R5-2460SBK-X	ST6R5-3060SBK-X
72"	ST6R5-2472SBK-X	ST6R5-3072SBK-X
84"	ST6R5-2484SBK-X	ST6R5-3084SBK-X
96"	ST6R5-2496SBK-X	ST6R5-3096SBK-X
108"	ST6R5-24108SBK-X	ST6R5-30108SBK-X
120"	ST6R5-24120SBK-X	ST6R5-30120SBK-X

STAINLESS STEEL DRAWERS

- 15"x20"x5"
- Stainless Steel Front Drawer And Pan
- Available In Poly Friction Slides or Stainless Steel Roller Bearings



DP2015-S30-X



DR2015-S30-X

POLY FRICTION SLIDES

MODEL	DESCRIPTION
DP2015-S24-X	24" Wide Stainless Tables Only
DP2015-S30-X	30" Wide Stainless Tables Only
DP2015-S36-X	36" Wide Stainless Tables Only
DP2015-W-X	Wood Top Tables Only - Any Size

STAINLESS STEEL ROLLER BEARINGS

MODEL	DESCRIPTION
DR2015-S24-X	24" Wide Stainless Tables Only
DR2015-S30-X	30" Wide Stainless Tables Only
DR2015-S36-X	36" Wide Stainless Tables Only
DR2015-W-X	Wood Top Tables Only - Any Size

STALLION WORK TABLES W/GALVANIZED BRACING

FWFSF1022

STALLION WORK TABLES W/ADJUSTABLE GALVANIZED STEEL BRACING



- 16GA 300 Series Stainless Steel, Flat Top
- Stallion Edge, Straight Turndown on Sides
- Galvanized Legs And Bracing w/ Metal Bullet Feet
- Shipped Knocked-Down, Easy-To-Assemble

ASSEMBLY VIDEO ONLINE AT
[YOUTUBE.COM/JOHNBOOSCO](https://www.youtube.com/JohnBoosCo)



ST6-3048GBK-X

LENGTH	24" WIDTH	30" WIDTH	36" WIDTH
30"	ST6-2430GBK-X	ST6-3030GBK-X	-
36"	ST6-2436GBK-X	ST6-3036GBK-X	-
48"	ST6-2448GBK-X	ST6-3048GBK-X	ST6-3648GBK-X
60"	ST6-2460GBK-X	ST6-3060GBK-X	ST6-3660GBK-X
72"	ST6-2472GBK-X	ST6-3072GBK-X	ST6-3672GBK-X
84"	ST6-2484GBK-X	ST6-3084GBK-X	ST6-3684GBK-X
96"	ST6-2496GBK-X	ST6-3096GBK-X	ST6-3696GBK-X
108"	ST6-24108GBK-X	ST6-30108GBK-X	-
120"	ST6-24120GBK-X	ST6-30120GBK-X	-

STALLION WORK TABLES W/5" RISER & GALVANIZED BRACING



- 16GA 300 Series Stainless Steel Top
- 1.5" Turn Up Rear Riser Top
- Stallion Edge, Straight Turndown on Sides
- Galvanized Bracing & Legs
- Adjustable Metal Bullet Feet
- Shipped Knocked-Down, Easy-To-Assemble

ASSEMBLY VIDEO ONLINE AT
[YOUTUBE.COM/JOHNBOOSCO](https://www.youtube.com/JohnBoosCo)



ST6R5-3048GBK-X

LENGTH	24" WIDTH	30" WIDTH
24"	-	ST6R5-3024GBK-X
30"	ST6R5-2430GBK-X	ST6R5-3030GBK-X
36"	ST6R5-2436GBK-X	ST6R5-3036GBK-X
48"	ST6R5-2448GBK-X	ST6R5-3048GBK-X
60"	ST6R5-2460GBK-X	ST6R5-3060GBK-X
72"	ST6R5-2472GBK-X	ST6R5-3072GBK-X
84"	ST6R5-2484GBK-X	ST6R5-3084GBK-X
96"	ST6R5-2496GBK-X	ST6R5-3096GBK-X
108"	ST6R5-24108GBK-X	ST6R5-30108GBK-X
120"	ST6R5-24120GBK-X	ST6R5-30120GBK-X

OPTIONAL STAINLESS STEEL LEGS WITH 5" LOCKING CASTERS

- Finished Working Height Of 35-3/4"
- For Adding Casters To Existing Work Tables In Field.

MODEL	DESCRIPTION
SLEG-34.75C-4-X	Set of 4
SLEG-34.75C-6-X	Set of 6

SELF CLOSING STAINLESS STEEL DRAWERS

- 20"x20"x5"
- Self Closing Drawer
- Stainless Steel Front Drawer And Pan



MODEL	DESCRIPTION
DR2020SC-S30-X	30" Wide Stainless Tables Only
DR2020SC-S36-X	36" Wide Stainless Tables Only
DR2020SC-W-X	Wood Top Tables Only - Any Size

REPLACEMENT CASTERS

- 5" Heavy Duty Locking Casters For Round Legs
- *NOTE: If "ST" Work Tables Are Ordered With Casters CAS01-R or CAS02-R, table legs will be precut to allow a finished working height of 35-3/4". (Available For "ST" Tables Only.)



MODEL	DESCRIPTION
CAS01-R-X	Set of 4
CAS02-R-X	Set of 6

STALLION WORK TABLES W/RISER & SHELF

FWFSF1022

STALLION WORK TABLES W/1.5" REAR RISER & STAINLESS STEEL SHELF



- 16GA 300 Series Stainless Steel Top
- 1.5" Turn Up Rear Riser Top
- Stallion Edge, Straight Turndown on Sides
- Available With Adjustable Lower Shelf
- Adjustable Metal Bullet Feet
- Shipped Knocked-Down, Easy-To-Assemble



ST6R1.5-3048SSK-X

LENGTH	24" WIDTH	30" WIDTH	36" WIDTH
30"	ST6R1.5-2430SSK-X	ST6R1.5-3030SSK-X	-
36"	ST6R1.5-2436SSK-X	ST6R1.5-3036SSK-X	-
48"	ST6R1.5-2448SSK-X	ST6R1.5-3048SSK-X	ST6R1.5-3648SSK-X
60"	ST6R1.5-2460SSK-X	ST6R1.5-3060SSK-X	ST6R1.5-3660SSK-X
72"	ST6R1.5-2472SSK-X	ST6R1.5-3072SSK-X	ST6R1.5-3672SSK-X
84"	ST6R1.5-2484SSK-X	ST6R1.5-3084SSK-X	ST6R1.5-3684SSK-X
96"	ST6R1.5-2496SSK-X	ST6R1.5-3096SSK-X	ST6R1.5-3696SSK-X
108"	ST6R1.5-24108SSK-X	ST6R1.5-30108SSK-X	-
120"	ST6R1.5-24120SSK-X	ST6R1.5-30120SSK-X	-

STALLION WORK TABLES W/1.5" REAR RISER & GALVANIZED SHELF



- 16GA 300 Series Stainless Steel Top
- 1.5" Turn Up Rear Riser Top
- Stallion Edge, Straight Turndown on Sides
- Available With Adjustable Lower Shelf
- Adjustable Metal Bullet Feet
- Shipped Knocked-Down, Easy-To-Assemble



ST6R1.5-3048GSK-X

LENGTH	24" WIDE	30" WIDE	36" WIDE
30"	ST6R1.5-2430GSK-X	ST6R1.5-3030GSK-X	-
36"	ST6R1.5-2436GSK-X	ST6R1.5-3036GSK-X	-
48"	ST6R1.5-2448GSK-X	ST6R1.5-3048GSK-X	ST6R1.5-3648GSK-X
60"	ST6R1.5-2460GSK-X	ST6R1.5-3060GSK-X	ST6R1.5-3660GSK-X
72"	ST6R1.5-2472GSK-X	ST6R1.5-3072GSK-X	ST6R1.5-3672GSK-X
84"	ST6R1.5-2484GSK-X	ST6R1.5-3084GSK-X	ST6R1.5-3684GSK-X
96"	ST6R1.5-2496GSK-X	ST6R1.5-3096GSK-X	ST6R1.5-3696GSK-X
108"	ST6R1.5-24108GSK-X	ST6R1.5-30108GSK-X	-
120"	ST6R1.5-24120GSK-X	ST6R1.5-30120GSK-X	-

STAINLESS STEEL DRAWERS

- 15"x20"x5"
- Stainless Steel Front Drawer And Pan
- Available In Poly Friction Slides or Stainless Steel Roller Bearings



DP2015-S30-X



DR2015-S30-X

POLY FRICTION SLIDES

MODEL	DESCRIPTION
DP2015-S24-X	24" Wide Stainless Tables Only
DP2015-S30-X	30" Wide Stainless Tables Only
DP2015-S36-X	36" Wide Stainless Tables Only
DP2015-W-X	Wood Top Tables Only - Any Size

STAINLESS STEEL ROLLER BEARINGS

MODEL	DESCRIPTION
DR2015-S24-X	24" Wide Stainless Tables Only
DR2015-S30-X	30" Wide Stainless Tables Only
DR2015-S36-X	36" Wide Stainless Tables Only
DR2015-W-X	Wood Top Tables Only - Any Size

STALLION WORK TABLES W/RISER & BRACING

FWFSF1022

STALLION WORK TABLES W/1.5" REAR RISER & STAINLESS STEEL BRACING



- 16GA 300 Series Stainless Steel Top
- 1.5" Turn Up Rear Riser Top
- Stallion Edge, Straight Turndown on Sides
- Stainless Steel Lower Bracing & Legs
- Adjustable Metal Bullet Feet
- Shipped Knocked-Down, Easy-To-Assemble



ST6R1.5-3048SBK-X

LENGTH	24" WIDTH	30" WIDTH	36" WIDTH
30"	ST6R1.5-2430SBK-X	ST6R1.5-3030SBK-X	-
36"	ST6R1.5-2436SBK-X	ST6R1.5-3036SBK-X	-
48"	ST6R1.5-2448SBK-X	ST6R1.5-3048SBK-X	ST6R1.5-3648SBK-X
60"	ST6R1.5-2460SBK-X	ST6R1.5-3060SBK-X	ST6R1.5-3660SBK-X
72"	ST6R1.5-2472SBK-X	ST6R1.5-3072SBK-X	ST6R1.5-3672SBK-X
84"	ST6R1.5-2484SBK-X	ST6R1.5-3084SBK-X	ST6R1.5-3684SBK-X
96"	ST6R1.5-2496SBK-X	ST6R1.5-3096SBK-X	ST6R1.5-3696SBK-X
108"	ST6R1.5-24108SBK-X	ST6R1.5-30108SBK-X	-
120"	ST6R1.5-24120SBK-X	ST6R1.5-30120SBK-X	-

STALLION WORK TABLES W/1.5" REAR RISER & GALVANIZED BRACING



- 16GA 300 Series Stainless Steel Top
- 1.5" Turn Up Rear Riser Top
- Stallion Edge, Straight Turndown on Sides
- Galvanized Bracing & Legs
- Adjustable Metal Bullet Feet
- Shipped Knocked-Down, Easy-To-Assemble



ST6R1.5-3048GBK-X

LENGTH	24" WIDTH	30" WIDTH	36" WIDTH
30"	ST6R1.5-2430GBK-X	ST6R1.5-3030GBK-X	-
36"	ST6R1.5-2436GBK-X	ST6R1.5-3036GBK-X	-
48"	ST6R1.5-2448GBK-X	ST6R1.5-3048GBK-X	ST6R1.5-3648GBK-X
60"	ST6R1.5-2460GBK-X	ST6R1.5-3060GBK-X	ST6R1.5-3660GBK-X
72"	ST6R1.5-2472GBK-X	ST6R1.5-3072GBK-X	ST6R1.5-3672GBK-X
84"	ST6R1.5-2484GBK-X	ST6R1.5-3084GBK-X	ST6R1.5-3684GBK-X
96"	ST6R1.5-2496GBK-X	ST6R1.5-3096GBK-X	ST6R1.5-3696GBK-X
108"	ST6R1.5-24108GBK-X	ST6R1.5-30108GBK-X	-
120"	ST6R1.5-24120GBK-X	ST6R1.5-30120GBK-X	-

OPTIONAL STAINLESS STEEL LEGS WITH 5" LOCKING CASTERS

- Finished Working Height Of 35-3/4"
- For Adding Casters To Existing Work Tables In Field.

MODEL	DESCRIPTION
SLEG-34.75C-4-X	Set of 4
SLEG-34.75C-6-X	Set of 6

SELF CLOSING STAINLESS STEEL DRAWERS

- 20"x20"x5"
- Self Closing Drawer
- Stainless Steel Front Drawer And Pan



MODEL	DESCRIPTION
DR2020SC-S30-X	30" Wide Stainless Tables Only
DR2020SC-S36-X	36" Wide Stainless Tables Only
DR2020SC-W-X	Wood Top Tables Only - Any Size

REPLACEMENT CASTERS

- 5" Heavy Duty Locking Casters For Round Legs
- *NOTE: If "ST" Work Tables Are Ordered With Casters CAS01-R or CAS02-R, table legs will be precut to allow a finished working height of 35-3/4". (Available For "ST" Tables Only.)



MODEL	DESCRIPTION
CAS01-R-X	Set of 4
CAS02-R-X	Set of 6

"E-SERIES" BUDGET WORK TABLES

FWFSF1022

"E-SERIES" BUDGET WORK TABLES W/STAINLESS UNDERSHELF NSF

- 18GA Type 430 Stainless Steel, Flat Top
- Stallion Edge Both Faces, Straight Turn Down On Sides
- Adjustable Stainless Steel Legs And Undershef
- Adjustable Bullet Feet
- Shipped Knocked-Down, Easy-To-Assemble



FBL4830-X

LENGTH	18" WIDE	24" WIDE	30" WIDE
24"	FBL2418-X	FBL2424-X	-
30"	FBL3018-X	FBL3024-X	FBL3030-X
36"	FBL3618-X	FBL3624-X	FBL3630-X
48"	FBL4818-X	FBL4824-X	FBL4830-X
60"	FBL6018-X	FBL6024-X	FBL6030-X
72"	FBL7218-X	FBL7224-X	FBL7230-X
96"	FBL9618-X	FBL9624-X	FBL9630-X

"E-SERIES" BUDGET WORK TABLES W/GALVANIZED UNDERSHELF NSF

- 18GA Type 430 Stainless Steel, Flat Top
- Stallion Edge Both Faces, Straight Turn Down On Sides
- Adjustable Galvanized Legs And Undershef
- Adjustable Bullet Feet
- Shipped Knocked-Down, Easy-To-Assemble



FBL4830-X

LENGTH	18" WIDE	24" WIDE	30" WIDE
24"	-	FBLG2424-X	-
30"	-	FBLG3024-X	FBLG3030-X
36"	FBLG3618-X	FBLG3624-X	FBLG3630-X
48"	FBLG4818-X	FBLG4824-X	FBLG4830-X
60"	FBLG6018-X	FBLG6024-X	FBLG6030-X
72"	FBLG7218-X	FBLG7224-X	FBLG7230-X
84"	-	FBLG8424-X	FBLG8430-X
96"	FBLG9618-X	FBLG9624-X	FBLG9630-X

"E-SERIES" BUDGET WORK TABLES W/5" RISER & GALVANIZED UNDERSHELF NSF

- 18GA Type 430 Stainless Steel, 5" Riser Top
- Stallion Edge, Straight Turndown on Sides
- Adjustable Galvanized Legs And Undershef
- Adjustable Bullet Feet
- Shipped Knocked-Down, Easy-To-Assemble



FBLGR5-4830-X

LENGTH	24" WIDE	30" WIDE
24"	FBLGR5-2424-X	-
30"	FBLGR5-3024-X	FBLGR5-3030-X
36"	FBLGR5-3624-X	FBLGR5-3630-X
48"	FBLGR5-4824-X	FBLGR5-4830-X
60"	FBLGR5-6024-X	FBLGR5-6030-X
72"	FBLGR5-7224-X	FBLGR5-7230-X
84"	FBLGR5-8424-X	FBLGR5-8430-X
96"	FBLGR5-9624-X	FBLGR5-9630-X

"E-SERIES" BUDGET WORK TABLES

FWFSF1022

"E-SERIES" BUDGET WORK TABLES W/1.5" RISER & STAINLESS UNDERSHELF

- 18GA Type 430 Stainless Steel, 1.5" Turn Up Rear Riser Top
- Stallion Edge, Straight Turndown on Sides
- Adjustable Galvanized Legs And Undershef
- Adjustable Bullet Feet
- Shipped Knocked-Down, Easy-To-Assemble



UFBLS4830-X

LENGTH	18" WIDE	24" WIDE	30" WIDE
24"	UFBLS2418-X	UFBLS2424-X	-
30"	UFBLS3018-X	UFBLS3024-X	UFBLS3030-X
36"	UFBLS3618-X	UFBLS3624-X	UFBLS3630-X
48"	UFBLS4818-X	UFBLS4824-X	UFBLS4830-X
60"	UFBLS6018-X	UFBLS6024-X	UFBLS6030-X
72"	UFBLS7218-X	UFBLS7224-X	UFBLS7230-X
96"	UFBLS9618-X	UFBLS9624-X	UFBLS9630-X

"E-SERIES" BUDGET WORK TABLES W/1.5" RISER & GALVANIZED UNDERSHELF

- 18GA Type 430 Stainless Steel, 1.5" Turn Up Rear Riser Top
- Stallion Edge, Straight Turndown on Sides
- Adjustable Galvanized Legs And Undershef
- Adjustable Bullet Feet
- Shipped Knocked-Down, Easy-To-Assemble



UFBLG4830-X

LENGTH	18" WIDE	24" WIDE	30" WIDE
24"	-	UFBLG2424-X	-
30"	-	UFBLG3024-X	UFBLG3030-X
36"	UFBLG3618-X	UFBLG3624-X	UFBLG3630-X
48"	UFBLG4818-X	UFBLG4824-X	UFBLG4830-X
60"	UFBLG6018-X	UFBLG6024-X	UFBLG6030-X
72"	UFBLG7218-X	UFBLG7224-X	UFBLG7230-X
84"	-	UFBLG8424-X	UFBLG8430-X
96"	UFBLG9618-X	UFBLG9624-X	UFBLG9630-X

WALL CORNER GUARDS

- 16GA Stainless Steel
- 2"x2" and 4"x4" Sizes
- Available For Inside Or Outside Corners
- Sold Individually

MODEL	L X W	DESCRIPTION
CORNER482-OUT-X	2"x2"x48"	Outside Corner
CORNER602-OUT-X	2"x2"x60"	Outside Corner
CORNER962-OUT-X	2"x2"x96"	Outside Corner
CORNER484-OUT-X	4"x4"x48"	Outside Corner
CORNER484-IN-X	4"x4"x48"	Inside Corner



EXPEDITING WORK TABLE / FILLER TABLES

FWFSF1022



ET6-2484SSW-X

EXPEDITING WORK TABLE

- 16GA 300 Series Stainless Steel, Sound Deadened Top
- Reinforced With 1"x2" Channel That Runs Entire Length Of Table
- Stainless Steel Base With Welded Undershelf
- 84"x12"x18" Overshelf With 1" Post - Fully Welded
- Hatco Glo-Ray® Infrared Food Warmer, 72" Long, High Wattage (1725w, 120V/60/1-PH) With Built-In Toggle Switch, 6' Cord
- 35-3/4" Working Height
- 5" Locking Casters

MODEL	L X W
ET6-2484SSW-X	84"x24"

OPTIONAL ACCESSORIES

MODEL	DESCRIPTION
X-FMS001	Mid Shelf, Full Length Of Table
X-HMS001	Mid Shelf, Half Length Of Table
X-HTR001	Tray Rack, Half Length Of Table, 9" Spacing
X-FTR001	Tray Rack, Full Length Of Table, 9" Spacing



ET6-2484SSW-X
(W/X-FMS001)



ET6-2484SSW-X
(W/X-HTR001 & HMS001)



ET6-2484SSW-X
(W/X-FTR001)



EFT8-3015-X

RISER TOP FILLER TABLES 1.5" TURN UP W/ADJUSTABLE UNDERSHELF



- 18GA 430 Series Stainless Steel
- Stallion Edge Both Faces, Straight Turn Down On Sides
- 1.5" Turned Up Rear Riser
- Adjustable Lower Shelf w/Plastic Bullet Feet
- Shipped Knocked-Down, Easy-To-Assemble

STAINLESS STEEL LEGS AND SHELF

MODEL	L X W
EFT8-3012SSK-X	12"x30"
EFT8-3015SSK-X	15"x30"
EFT8-3018SSK-X	18"x30"
EFT8-3024SSK-X	24"x30"
EFT8-3612SSK-X	12"x36"
EFT8-3615SSK-X	15"x36"
EFT8-3618SSK-X	18"x36"
EFT8-3624SSK-X	24"x36"

GALVANIZED LEGS AND SHELF

MODEL	L X W
EFT8-3012-X	12"x30"
EFT8-3015-X	15"x30"
EFT8-3018-X	18"x30"
EFT8-3024-X	24"x30"
EFT8-3612-X	12"x36"
EFT8-3615-X	15"x36"
EFT8-3618-X	18"x36"
EFT8-3624-X	24"x36"



DROP-IN SINK & FAUCET

EFT8-3015SSK-S-X

FILLER TABLE WITH DROP-IN SINK

- 18GA Type 400 Stainless Steel Top
- 1-1/2" Turn Up Rear Riser
- Stallion Edge Front, Straight Turndown on Sides
- Stainless Steel Legs And Adjustable Undershelf
- Adjustable Bullet Feet
- Includes Drop-In Sink (10"x14"x5" Bowl Size)
- Includes Economy Faucet (PBF-4-D-LF-X)

MODEL	L X W
EFT8-3015SSK-S-X	15"x30"
EFT8-3018SSK-S-X	18"x30"
EFT8-3024SSK-S-X	24"x30"

ADJUSTABLE LIFT TABLES / OVERSHELVES

FWFSF1022

ERGONOMIC ADJUSTABLE LIFT TABLES - STAINLESS STEEL

- 16GA Stainless Steel Top
- Fixed Stainless Steel Undershaft
- Hydraulic Lift System
- 32" - 40" Adjustable Table Height
- 8" Stroke Lift System Cylinders
- Hand Crank Height Adjustment
- Foldable Hand Crank When Not In Use.
- Adjustable Floor Glides



LT6-3048SSW-X

FOLDABLE HAND CRANK



LT6R5-3048SSW-X

FOLDABLE HAND CRANK

FLAT TOP HYDRAULIC LIFT TABLES W/LOWER SHELF

MODEL	L X W	
LT6-3048SSW-X	48"x30"	
LT6-3060SSW-X	60"x30"	
LT6-3072SSW-X	72"x30"	

5" RISER TOP HYDRAULIC LIFT TABLES W/LOWER SHELF

MODEL	L X W	
LT6R5-3048SSW-X	48"x30"	
LT6R5-3060SSW-X	60"x30"	
LT6R5-3072SSW-X	72"x30"	

ECONOMY OVERSHELVES



- 18GA 300 Series Stainless Steel
- Double Overshelves Including Adjustable Lower Shelf

SINGLE ECONOMY OVERSHELVES

MODEL	L X W	
OS-ES-1236-X	36"x12"	
OS-ES-1248-X	48"x12"	
OS-ES-1260-X	60"x12"	
OS-ES-1272-X	72"x12"	
OS-ES-1296-X	96"x12"	
OS-ES-1836-X	36"x18"	
OS-ES-1848-X	48"x18"	
OS-ES-1860-X	60"x18"	
OS-ES-1872-X	72"x18"	
OS-ES-1896-X	96"x18"	



OS-ES-1248-X
(DOES NOT INCLUDE TABLE)

DOUBLE ECONOMY OVERSHELVES

MODEL	L X W	
OS-ED-1236-X	36"x12"	
OS-ED-1248-X	48"x12"	
OS-ED-1260-X	60"x12"	
OS-ED-1272-X	72"x12"	
OS-ED-1296-X	96"x12"	
OS-ED-1836-X	36"x18"	
OS-ED-1848-X	48"x18"	
OS-ED-1860-X	60"x18"	
OS-ED-1872-X	72"x18"	
OS-ED-1896-X	96"x18"	



OS-ED-1260-X
(DOES NOT INCLUDE TABLE)

EQUIPMENT / MACHINE STANDS

FWFSF1022

EQUIPMENT STANDS - 16GA



- 16GA Stainless Steel Top
- 18GA Adjustable Undershelf
- Galvanized or Stainless Steel Legs With Adj Bullet Feet
- 1.5" High Rear and Side Risers
- 24" Overall Height



GS6-3048SSK-X

STAINLESS STEEL LEGS & ADJ UNDERSHELF

MODEL	L X W
GS6-3015SSK-X	15"x30"
GS6-3018SSK-X	18"x30"
GS6-3024SSK-X	24"x30"
GS6-3036SSK-X	36"x30"
GS6-3048SSK-X	48"x30"
GS6-3060SSK-X	60"x30"
GS6-3072SSK-X *	72"x30"

*NOTE: (72" Long, Standard w/6 Legs)

GALVANIZED LEGS & ADJ UNDERSHELF

MODEL	L X W
GS6-3015GSK-X	15"x30"
GS6-3018GSK-X	18"x30"
GS6-3024GSK-X	24"x30"
GS6-3036GSK-X	36"x30"
GS6-3048GSK-X	48"x30"
GS6-3060GSK-X	60"x30"
GS6-3072GSK-X *	72"x30"

*NOTE: (72" Long, Standard w/6 Legs)

EQUIPMENT STANDS- 18GA "E-SERIES"



- 18GA 430 Series Stainless Steel Top
- 18GA Adjustable Undershelf
- Stainless Steel or Galvanized Legs And Adj Bullet Feet
- 1.5" High Rear and Side Risers
- 24" Overall Height



EES8-3048-X

STAINLESS STEEL LEGS & ADJ UNDERSHELF

MODEL	L X W
EES8-3015SSK-X	15"x30"
EES8-3018SSK-X	18"x30"
EES8-3024SSK-X	24"x30"
EES8-3036SSK-X	36"x30"
EES8-3048SSK-X	48"x30"
EES8-3060SSK-X	60"x30"
EES8-3072SSK-X *	72"x30"

*NOTE: (72" Long, Standard w/6 Legs)

GALVANIZED LEGS & ADJ UNDERSHELF

MODEL	L X W
EES8-3015-X	15"x30"
EES8-3018-X	18"x30"
EES8-3024-X	24"x30"
EES8-3036-X	36"x30"
EES8-3048-X	48"x30"
EES8-3060-X	60"x30"
EES8-3072-X *	72"x30"

*NOTE: (72" Long, Standard w/6 Legs)

HEAVY DUTY MACHINE STANDS



- 14GA 300 Series Stainless Steel
- 1-5/8" Legs & Bracing w/Adj. Metal Bullet Feet
- Marine Edge: 20" Tall
- Shipped Knocked Down Easy-To-Assemble



MS4-2424GSK-X

STAINLESS STEEL LEGS & SHELF

MODEL	L X W
MS4-2424SSK-X	24"x24"
MS4-2430SSK-X	30"x24"
MS4-3030SSK-X	30"x30"
MS4-3036SSK-X	36"x30"

GALVANIZED LEGS & SHELF

MODEL	L X W
MS4-2424GSK-X	24"x24"
MS4-2430GSK-X	30"x24"
MS4-3030GSK-X	30"x30"
MS4-3036GSK-X	36"x30"

MACHINE STANDS



- 16GA 300 Series Stainless Steel
- 1-5/8" Legs & Bracing w/Adj. Metal Bullet Feet
- Shipped Knocked Down Easy-To-Assemble
- Available Welded Setup At No Additional Cost



S16MS07-X

STAINLESS STEEL LEGS & BRACING

MODEL	L X W
S16MS06-X	24"x20"
S16MS07-X	24"x24"
S16MS08-X	30"x20"
S16MS09-X	30"x24"
S16MS10-X	30"x30"

GALVANIZED BASE & BRACING

MODEL	L X W
S16MS01-X	24"x20"
S16MS02-X	24"x24"
S16MS03-X	30"x20"
S16MS04-X	30"x24"
S16MS05-X	30"x30"

1-1/2" THICK MAPLE WOOD TOP WORK TABLES



- 1-1/2" Thick Hard Rock Flat Maple Top w/Penetrating Oil Finish
- Adjustable Bullet Feet

- Available In Galvanized or Stainless Steel Adj Lower Shelf
- Available In Galvanized or Stainless Steel Adj Bracing
- Shipped Knocked-Down, Easy-To-Assemble



JNS10-X



JNB09-X

GALVANIZED LEGS & ADJUSTABLE LOWER SHELF

MODEL	L X W
JNS1836-X	36"x18"
JNS1848-X	48"x18"
JNS1860-X	60"x18"
JNS1872-X	72"x18"
JNS1884-X	84"x18"
JNS1896-X	96"x18"
JNS09-X	48"x30"
JNS10-X	60"x30"
JNS11-X	72"x30"
JNS13-X	96"x30"

GALVANIZED LEGS & ADJUSTABLE BRACING

MODEL	L X W
JNB08-X	48"x30"
JNB09-X	60"x30"
JNB10-X	72"x30"
JNB11-X	96"x30"
JNB14-X	48"x36"
JNB15-X	60"x36"
JNB16-X	72"x36"
JNB17-X	96"x36"

1-3/4" THICK MAPLE WOOD TOP WORK TABLES



- 1-3/4" Thick Hard Rock Flat Maple Top w/Penetrating Oil Finish
- Adjustable Bullet Feet

- Available In Stainless Steel Adj Lower Shelf Or Adj Bracing
- Shipped Knocked-Down, Easy-To-Assemble



SNS09-X



SNB09-X

STAINLESS STEEL LEGS & ADJUSTABLE LOWER SHELF

MODEL	L X W
SNS1836-X	36"x18"
SNS1848-X	48"x18"
SNS1860-X	60"x18"
SNS1872-X	72"x18"
SNS1884-X	84"x18"
SNS1896-X	96"x18"
SNS08-X	48"x30"
SNS09-X	60"x30"
SNS10-X	72"x30"
SNS11-X	96"x30"
SNS13-X	36"x36"

STAINLESS STEEL LEGS & ADJUSTABLE BRACING

MODEL	L X W
SNB08-X	48"x30"
SNB09-X	60"x30"
SNB10-X	72"x30"
SNB11-X	96"x30"
SNB14-X	48"x36"
SNB15-X	60"x36"
SNB16-X	72"x36"
SNB17-X	96"x36"

OPTIONAL STAINLESS STEEL ADJUSTABLE LOWER SHELF



- 18GA Type 400 Stainless Steel With #4 Polish, Satin Finish
- Knocked Down Setup
- Fits JNS & SNS Tables



MODEL	L X W
ESSK8-3048-X	48"x30"
ESSK8-3060-X	60"x30"
ESSK8-3072-X	72"x30"
ESSK8-3096-X	96"x30"

WORK TABLES - WOOD TOP

FWFSF1022

1-3/4" THICK MAPLE WOOD TOP WITH 4" COVED RISER REAR & SIDES

- 1-3/4" Thick - Northern Hard Rock Maple Flat Top w/Penetrating Oil Finish
- 4" Coved Riser Rear And Sides
- Available In Galvanized or Stainless Steel Adj Lower Shelf
- Available In Galvanized or Stainless Steel Adj Bracing
- Shipped Knocked-Down, Easy-To-Assemble



DNS08-X



DNB08-X



DSS07-X



DSB07-X

GALVANIZED LEGS & ADJUSTABLE LOWER SHELF

MODEL	L X W
DNS07-X	48"x30"
DNS08-X	60"x30"
DNS09-X	72"x30"
DNS11-X	96"x30"

GALVANIZED LEGS & ADJUSTABLE BRACING

MODEL	L X W
DNB07-X	48"x30"
DNB08-X	60"x30"
DNB09-X	72"x30"
DNB11-X	96"x30"
DNB13-X	48"x36"
DNB14-X	60"x36"
DNB15-X	72"x36"
DNB17-X	96"x36"

STAINLESS STEEL LEGS & ADJUSTABLE LOWER SHELF

MODEL	L X W
DSS06-X	48"x30"
DSS07-X	60"x30"
DSS08-X	72"x30"
DSS09-X	96"x30"

STAINLESS STEEL LEGS & ADJUSTABLE BRACING

MODEL	L X W
DSB06-X	48"x30"
DSB07-X	60"x30"
DSB08-X	72"x30"
DSB09-X	96"x30"
DSB11-X	48"x36"
DSB12-X	60"x36"
DSB13-X	72"x36"
DSB14-X	96"x36"

1-1/2" THICK WALNUT WOOD TOP WORK TABLES

- 1-1/2" Thick American Black Walnut Top w/Penetrating Oil Finish
- Adjustable Bullet Feet
- Available In Galvanized Adjustable Bracing or Adjustable Undershef
- Shipped Knocked-Down, Easy-To-Assemble



WAL-JNB10-O-X



WAL-JNS10-O-X

GALVANIZED LEGS & ADJUSTABLE BRACING

MODEL	L X W
WAL-JNB02-O-X	48"x25"
WAL-JNB03-O-X	60"x25"
WAL-JNB08-O-X	48"x30"
WAL-JNB09-O-X	60"x30"

GALVANIZED LEGS & ADJUSTABLE UNDERSHELF

MODEL	L X W
WAL-JNS02-O-X	48"x25"
WAL-JNS03-O-X	60"x25"
WAL-JNS09-O-X	48"x30"
WAL-JNS10-O-X	60"x30"

SC STYLE REPLACEMENT TOPS - 1-3/4" THICK HARD ROCK MAPLE



- 1-3/4" Thick - Northern Hard Rock Maple Flat Top w/Penetrating Oil Finish
- Non-Reversible



MODEL	L X W	WT (LBS)
SC011-O-X	48"x30"	77
SC012-O-X	60"x30"	96
SC013-O-X	72"x30"	116
SC015-O-X	96"x30"	154

SB STYLE REPLACEMENT TOPS - 1-3/4" THICK HARD ROCK MAPLE WITH 4" HIGH HORIZONTALLY VERTICAL COVERED RISER



- 1-3/4" Thick - Northern Hard Rock Maple Flat Top w/Penetrating Oil Finish
- Non-Reversible
- 4" High Horizontal and Vertical Covered Risers On Back And Sides



MODEL	L X W	WT (LBS)
SB009-O-X	48"x30"	106
SB010-O-X	60"x30"	127
SB011-O-X	72"x30"	149
SB013-O-X	96"x30"	192



MYS128-X



MYS-3-X

BOOS BLOCK MYSTERY OIL

MODEL	DESCRIPTION
MYS-3-X	3 Pack - 16oz Bottle
MYS128-X	1 GAL Bottle

BAR KEEPERS FRIEND - CLEANSER

- As a bleach-free product, this cleanser is an ideal stainless steel cleaner and can easily remove rust, tarnish, mineral deposits, and tough stains from most surfaces.
- SURFACES: Stainless Steel, Porcelain, Ceramic, Copper Alloys, Fiberglass, Corian, Brass, Bronze, Chrome, Aluminum



MODEL	DESCRIPTION
BKF-P12-X	12oz - Single

JOHN BOOS STAINLESS STEEL CLEANER & POLISH

New and improved formula! A unique blend of plant-based ingredients deliver superior results that cleans and polishes stainless steel surfaces. Works great on appliances, countertops, sinks, grills and more. Removes streaks, smudges, and fingerprints. Eco-Friendly.

MODEL	DESCRIPTION
BSC-X	8oz Spray Bottle (Must Order In Quantities of 12)
BSC-3-X	8oz Spray Bottle (3-Pack)



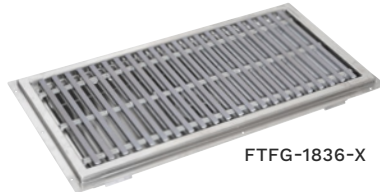
BEFORE AFTER

FLOOR TROUGHS / MOP SINKS

FWFSF1022



FTSG-1836-X



FTFG-1836-X

FLOOR TROUGHS

- 14GA 300 Series Construction With Mounting Flange
- 4" Round Stainless Steel No-Hub Pipe Connection
- Includes Removable Drain Basket

★ Ships Within 5 Business Days!

STAINLESS STEEL GRATES

- Removable 3/16"x1" Flatbar Subway Grating

MODEL	L X W	
FTSG-1212-X	12"x12"	
FTSG-1224-X	24"x12"	
FTSG-1236-X	36"x12"	
FTSG-1248-X	48"x12"	
FTSG-1260-X	60"x12"	
FTSG-1272-X *	72"x12"	
FTSG-1824-X	24"x18"	
FTSG-1836-X	36"x18"	
FTSG-1848-X	48"x18"	
FTSG-1860-X	60"x18"	

FIBERGLASS GRATES

- Removable Gray Fiberglass Subway-Style Grating With Non-Slip Surface

MODEL	L X W	
FTFG-1224-X	24"x12"	
FTFG-1236-X	36"x12"	
FTFG-1248-X	48"x12"	
FTFG-1260-X	60"x12"	
FTFG-1272-X *	72"x12"	
FTFG-1824-X	24"x18"	
FTFG-1836-X	36"x18"	
FTFG-1848-X	48"x18"	
FTFG-1860-X	60"x18"	

*NOTE: 72" Does Not Ship In 5 Business Days



DRAIN BASKET



PBMS-FMSG-SSLR-X



PBMS-FMFG-SSLR-X

FLUSH MOUNT MOP SINKS

- 14GA Type 300 Stainless Steel
- Flush Floor Mount Design For Roll-In Mop Bucket
- Standard Backsplash With Left Hand And Right Hand Splashes
- Accommodates A 4" O.D. Diameter Drain Pipe 3-1/4" Long
- Optional Stainless Steel or Fiberglass Subway-Style Grating
- Removable Stainless Steel Grate With 3/16" Stainless Steel Bar Stock on 3/4" Centers
- 5° Breaks In Bottom For Positive Drainage Towards Drain

MODEL	L X W X D	GRATE MATERIAL	
PBMS-FMSG-SSLR-X	21-7/8"x23-7/8"x30-1/4"	Stainless Steel	
PBMS-FMFG-SSLR-X	21-7/8"x23-7/8"x30-1/4"	Fiberglass	



PBMS2016-6-X



PBMS2820-12-X

MOP SINKS

- 16GA 300 Series Stainless Steel
- Includes 3-1/2" Free Flow Drain
- (Does not include faucet.)

MODEL	BOWL SIZE (L X W X D)	L X W	
PBMS2016-6-X	20"x16"x6" - 6" High Water Level	24-5/8"x19-1/8"	
PBMS2016-12-X	20"x16"x12" - 12" High Water Level	24-5/8"x19-1/8"	
PBMS2424-6-X	24"x24"x6" - 6" High Water Level	28-5/8"x27-3/8"	
PBMS2424-12-X	24"x24"x12" - 12" High Water Level	28-5/8"x27-3/8"	
PBMS2820-6-X	28"x20"x6" - 6" High Water Level	32-5/8"x23-1/8"	
PBMS2820-12-X	28"x20"x12" - 12" High Water Level	32-5/8"x23-1/8"	

MODEL	DESCRIPTION	
PBF-SS-6-X	Service Faucet w/Vacuum Breaker	



PBF-SS-6-X

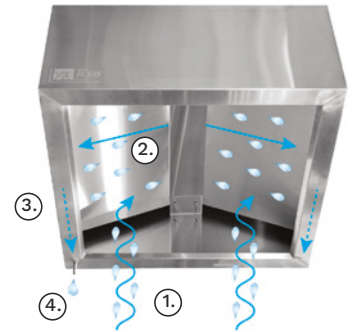
VENTLESS CONDENSATE HOODS

- 18GA Stainless Steel
- Full Perimeter Gutter
- Removable Condensate Baffle
- Rear Drain Tube
- Welded Hanging Brackets

***NOTE: Check local codes for approval.**

CONDENSATION HOOD FUNCTIONALITY

1. Condensation Rises
2. Hits Inner Baffle
3. Drips Onto Gutter
4. Exits Through Rear Drain Tube



MODEL	L X W	
C2HB-42-2-X	42"x42"	

CONDENSATE HOODS

- 18GA Stainless Steel Construction
- Full Perimeter Gutter
- Welded Hanging Brackets

MODEL	L X W	CFM	
C2H-36-2-X	36"x36"	450	
C2H-42-2-X	42"x42"	600	
C2H-60-2-X	60"x42"	875	



TYPE II EXHAUST HOODS

- 18GA Stainless Steel Construction
- Front And Back Troughs
- (1) Vapor Proof Light
- Started Exhaust Duct Collar
- Welded Hanging Brackets

MODEL	L X W	
C2HL-4548-X	45"x48"	
C2HL-4560-X	45"x60"	
C2HL-4572-X	45"x72"	
C2HL-4584-X	45"x84"	
C2HL-4596-X	45"x96"	

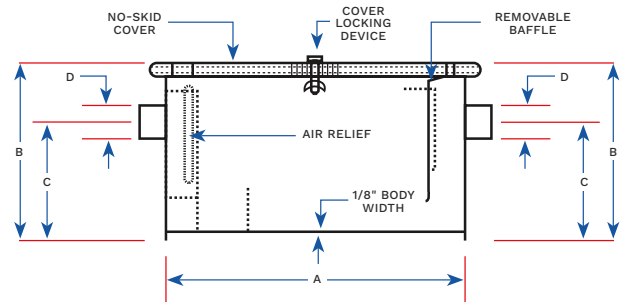


GREASE TRAPS



GT40-GT100

GT8-GT30



MODEL	SIZE	WIDTH	G.P.M CAPACITY	GREASE CAPACITY (LBS)	A	B	C	D
GT-8-X	8#	10.5"	4	8	14.2"	11.2"	7.5"	2"
GT-14-X	14#	13.5"	7	14	16.2"	18.3"	8.1"	2"
GT-20-X	20#	14.5"	10	20	20.1"	12.1"	8.1"	2"
GT-30-X	30#	16"	15	30	20.5"	13.8"	10.4"	2.5"
GT-40-X	40#	16"	20	40	22.5"	15"	11.5"	3"
GT-50-X	50#	17.5"	25	50	24.5"	16.5"	12"	3"
GT-70-X	70#	18"	35	70	28.5"	19.3"	14.1"	3.5"
GT-100-X	100#	22.25"	50	100	30.5"	21.5"	16.1"	4"

WALL SHELVES

FWFSF1022

18GA 300 - WALL SHELVES - 1.5" REAR HIGH RISER

- 18GA 300 Series Stainless Steel
- 1.5" Rear High Riser
- 6', 7', And 8' Wall Shelves Standard w/3 Support Brackets



BHS1236-X

MODEL	L X W	MODEL	L X W
BHS1224-X	24"x12"	BHS1624-X	24"x16"
BHS1236-X	36"x12"	BHS1636-X	36"x16"
BHS1248-X	48"x12"	BHS1648-X	48"x16"
BHS1260-X	60"x12"	BHS1660-X	60"x16"
BHS1272-X	72"x12"	BHS1672-X	72"x16"
BHS1284-X	84"x12"	BHS1684-X	84"x16"
BHS1296-X	96"x12"	BHS1696-X	96"x16"

18GA 430 - WALL SHELVES - 1.5" REAR HIGH RISER

- 18GA 430 Series Stainless Steel
- 1.5" Rear High Riser
- 6', 7', And 8' Wall Shelves Standard w/3 Support Brackets



EWS8-1236-X

MODEL	L X W	MODEL	L X W
EWS8-1224-X	24"x12"	EWS8-1624-X	24"x16"
EWS8-1236-X	36"x12"	EWS8-1636-X	36"x16"
EWS8-1248-X	48"x12"	EWS8-1648-X	48"x16"
EWS8-1260-X	60"x12"	EWS8-1660-X	60"x16"
EWS8-1272-X	72"x12"	EWS8-1672-X	72"x16"
EWS8-1284-X	84"x12"	EWS8-1684-X	84"x16"
EWS8-1296-X	96"x12"	EWS8-1696-X	96"x16"

WALL SHELVES 1.5" REAR HIGH RISER W/ SINGLE BAR POT RACK

- 18GA 300 Series Stainless Steel
- 1.5" Rear High Riser
- 6', 7', And 8' Wall Shelves Standard w/3 Support Brackets



BHS1236PR-X

MODEL	L X W
BHS1236PR-X	36"x12"
BHS1248PR-X	48"x12"
BHS1260PR-X	60"x12"
BHS1272PR-X	72"x12"

MICROWAVE SHELVES INVERTED "V" FRONT EDGE

- 16GA 300 Series Stainless Steel
- Inverted "V" Front Edge
- Electric Cord Cut-Out With Rubber Grommet



BMS2024-X

MODEL	L X W
BMS2024-X	24"x20"
BMS2030-X	30"x20"

SPICE SHELVES

- 16GA 300 Series Stainless Steel
- Includes Brackets And Mounting Hardware



BHS5166-X

WITHOUT 4" REAR HIGH RISER

MODEL	L X W
BHS5166-X	16"x5"
BHS5186-X	18"x5"
BHS5246-X	24"x5"
BHS5366-X	36"x5"
BHS5486-X	48"x5"

WITH 4" REAR HIGH RISER

MODEL	L X W
BHS516R6-X	16"x5"
BHS518R6-X	18"x5"
BHS524R6-X	24"x5"
BHS536R6-X	36"x5"
BHS548R6-X	48"x5"

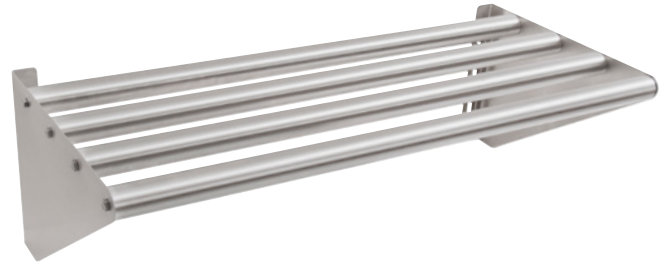


BHS516R6-X

TUBULAR WALL SHELVES

- 16GA 300 Series Stainless Steel
- 1-5/8" Tubing & Includes Brackets

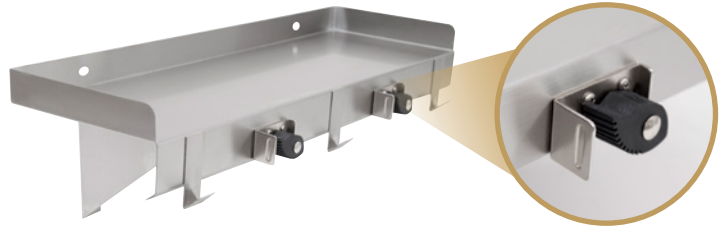
MODEL	L X W	
BHS1624-T-X	24"x16"	
BHS1636-T-X	36"x16"	
BHS1648-T-X	48"x16"	
BHS1660-T-X	60"x16"	
BHS1672-T-X	72"x16"	



UTILITY SHELF

- 16GA 300 Series Stainless Steel
- 1.5" Rear & Side Risers
- Includes Hooks & Mop/Broom Holder with Locking Cam

MODEL	L X W	
PB-MSS824-X	24"x8"	



MOP/BROOM HOLDER WITH LOCKING CAM

MOP BROOM HOLDER

- Stainless Steel
- (3) Rubber Cam Grips

MODEL	L X W	
PB-MH-3-X	26"x3"	



STALLION POT RACKS

- 300 Series Stainless Steel
- Made of 3/16"x2" Stainless Steel Flat Bar
- All Racks Provided With 300 Series Stainless Steel Hooks (See Chart For Quantity Per Size.)



PRW11-X

PRW21-X

SINGLE BAR - WALL MOUNT POT RACKS - PRW1

MODEL	L X W	# OF HOOKS	
PRW11-X	48"	4	
PRW12-X	60"	5	
PRW13-X	72"	6	
PRW14-X	96"	8	
PRW15-X	120"	10	

DOUBLE BAR - WALL MOUNT POT RACKS - PRW2

MODEL	L X W	# OF HOOKS	
PRW21-X	48"	8	
PRW22-X	60"	10	
PRW23-X	72"	12	
PRW24-X	96"	16	
PRW25-X	120"	20	

STAINLESS STEEL MICROWAVE SHELF

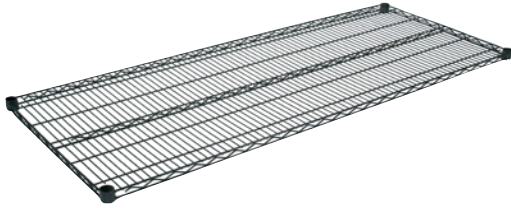
- 14GA Type 300 Stainless Steel With #4 Polish, Satin Finish
- Finished with 1-9/16" bends on all sides
- Reinforced With 1-1/2" Square Tube Support Brackets To Mount To Wall
- All Joints Are Welded And Polished

MODEL	L X W	
CGS-MS2026-X	20"x26"	



WIRE SHELVING

FWFSF1022



WIRE SHELF - 14" WIDE

MODEL	SHELF SIZE (W XL)	WT/LB EACH	# SHIPPED PER CTN
EPS-1424-G-X	14"x24"	6 lbs	4
EPS-1430-G-X	14"x30"	7 lbs	4
EPS-1436-G-X	14"x36"	8 lbs	4
EPS-1442-G-X	14"x42"	9 lbs	4
EPS-1448-G-X	14"x48"	10 lbs	4
EPS-1454-G-X	14"x54"	11 lbs	4
EPS-1460-G-X	14"x60"	14 lbs	2
EPS-1472-G-X	14"x72"	16 lbs	2

WIRE SHELF - 21" WIDE

MODEL	SHELF SIZE (W XL)	WT/LB EACH	# SHIPPED PER CTN
EPS-2124-G-X	21"x24"	7 lbs	4
EPS-2130-G-X	21"x30"	9 lbs	4
EPS-2136-G-X	21"x36"	10 lbs	4
EPS-2142-G-X	21"x42"	11 lbs	4
EPS-2148-G-X	21"x48"	13 lbs	4
EPS-2154-G-X	21"x54"	15 lbs	2
EPS-2160-G-X	21"x60"	17 lbs	2
EPS-2172-G-X	21"x72"	20 lbs	2

GREEN EPOXY WIRE SHELVES NSF

- Zinc Based Epoxy Coated Shelving Can Be Used In Any Environment - Includes 10 Year Warranty
 - Chrome Dry Storage Shelving - 1 Year Warranty
 - 300 lbs. Max Capacity Per Shelf Evenly Distributed
 - 1200 lbs Max Capacity For Total Shelving Unit
- *NOTE: All Warranty Pro-Rated From Day Of Shipment**

WIRE SHELF - 18" WIDE

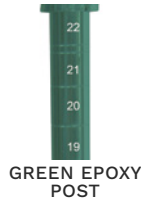
MODEL	SHELF SIZE (W XL)	WT/LB EACH	# SHIPPED PER CTN
EPS-1824-G-X	18"x24"	7 lbs	4
EPS-1830-G-X	18"x30"	8 lbs	4
EPS-1836-G-X	18"x36"	9 lbs	4
EPS-1842-G-X	18"x42"	10 lbs	4
EPS-1848-G-X	18"x48"	12 lbs	4
EPS-1854-G-X	18"x54"	14 lbs	2
EPS-1860-G-X	18"x60"	15 lbs	2
EPS-1872-G-X	18"x72"	18 lbs	2

WIRE SHELF - 24" WIDE

MODEL	SHELF SIZE (W XL)	WT/LB EACH	# SHIPPED PER CTN
EPS-2424-G-X	24"x24"	8 lbs	4
EPS-2430-G-X	24"x30"	10 lbs	4
EPS-2436-G-X	24"x36"	12 lbs	4
EPS-2442-G-X	24"x42"	14 lbs	4
EPS-2448-G-X	24"x48"	15 lbs	4
EPS-2454-G-X	24"x54"	18 lbs	2
EPS-2460-G-X	24"x60"	18 lbs	2
EPS-2472-G-X	24"x72"	24 lbs	2

GREEN EPOXY POSTS NSF

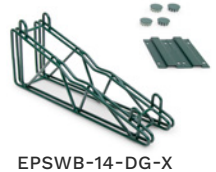
MODEL	POST SIZE	WT/LB EACH	# SHIPPED PER CTN
EPP-13-G-X	13"	1	4
EPP-33-G-X	33"	4	4
EPP-54-G-X	54"	4	4
EPP-66-G-X	66"	4	4
EPP-74-G-X	74"	5	4
EPP-86-G-X	86"	6	4



WIRE SHELVING WALL BRACKETS NSF

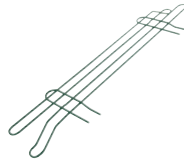
- Wall Brackets Sold Individually
- Available As Single or Double Wall Bracket

MODEL	DESC.	DEPTH
EPSWB-14-SG-X	Single	14"
EPSWB-18-SG-X	Single	18"
EPSWB-14-DG-X	Double	14"
EPSWB-18-DG-X	Double	18"



GREEN EPOXY LEDGES NSF

MODEL	LENGTH
EPS-L24-G-X	24"
EPS-L36-G-X	36"
EPS-L48-G-X	48"
EPS-L60-G-X	60"
EPS-L72-G-X	72"



5" LOCKING CASTERS W/BUMPERS

MODEL
CASWS05-4-X *

(Set of 4)

***NOTE: For Wire Shelving Only**



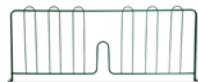
S-HOOKS

MODEL
SHKS-2G-X (Set of 2)



GREEN EPOXY DIVIDERS NSF

MODEL	LENGTH
EPS-D14-G-X	14"
EPS-D18-G-X	18"
EPS-D21-G-X	21"
EPS-D24-G-X	24"



WIRE SHELF SUPPORT BRACKET

- Securely Mounts Wire Shelving Post To Wall
- Available In Chrome Finish
- Wire Shelf Support Bracket Sold Individually
- Post Or Shelving Not Included

MODEL
CWB-1-X



MOBILE WIRE CART

- Available In Northern Hard Rock Maple or American Black Walnut
- Varnique Finish Top
- 2 Chrome or Black Adjustable Wire Shelves
- 130 lbs Per Shelf Capacity Evenly Distributed
- Numbered Posts With 3" Locking Casters
- 36" Overall Height



MODEL	WOOD SPECIES	SHELF SIZE (L X W)	SHELF COLOR	TOP SIZE (L X W X H)
MET-MWC-1-X	Maple	24"x18"	Chrome	27"x21"x1-1/2"
MET-MWC-2-X	Maple	30"x24"	Chrome	33"x27"x1-1/2"
MET-CWC-1-X	Cherry	24"x18"	Chrome	27"x21"x1-1/2"
MET-WWC-1-X	Walnut	24"x18"	Chrome	27"x21"x1-1/2"
MET-WWC-2-X	Walnut	30"x24"	Chrome	33"x27"x1-1/2"

FORMAGGIO CART WITH REMOVABLE BOOS BLOCK® TOP

- 1-1/2" Thick - Northern Hard Rock Maple Removable Boos Block Top
- 18GA Type 430 Stainless Steel Base
- (2) 18GA Type 430 Stainless Steel Fixed Shelves
- Stainless Steel Towel Bar
- (4) 3" Locking Casters



REMOVABLE TOP

MODEL	L X W X H
CUFC-M1830-X	30"x18"x36"

UNIVERSAL DEEP FRYER SPLASH GUARD

- 18GA 300 Stainless Steel
- Fits Left or Right Side Of Fryer
- Sold Individually

MODEL	L X H
FSG-2018-X	20"x18"



DRY STORAGE SHELF

FWFSF1022

3 TIERED ALUMINUM KEG RACK

- Aluminum Shelves Constructed Of 1-3/4" Square Tubing
- Aluminum Posts
- (2) Adjustable Keg Storage Racks
- (1) Adjustable Top Storage Shelf
- Shipped Knocked-Down

***NOTE: Includes 3 Sets of Legs**

MODEL	L X W X H
ALKR-2042-X	42"x20" x76"
ALKR-2060-X	60"x20" x76"
ALKR-2072-X *	72"x20" x76"
ALKR-2080-X *	80"x20" x76"
ALKR-2093-X *	93"x20" x76"

OPTIONAL REAR KEG STRAP

- Aluminum Constructed Of 1-3/4" Square Tubing
- Prevents Kegs From Sliding Off The Rear Keg Rack

MODEL	L X W
ALKRS-2042-X	42"x20"
ALKRS-2060-X	60"x20"
ALKRS-2072-X	72"x20"
ALKRS-2080-X	80"x20"
ALKRS-2093-X	93"x20"



OPTIONAL REAR KEG STRAP



ALKRS-2042-X



ALKR-2042-X



ALUMINUM DUNNAGE RACK



- 6065 Aluminum Construction
- 1.5" Square Tube Frame
- 1,500 lbs Weight Capacity

MODEL	L X W X H
ALJB362012-X	36"x20"x12"
ALJB362412-X	36"x24"x12"
ALJB482012-X	48"x20"x12"
ALJB482412-X	48"x24"x12"
ALJB602012-X	60"x20"x12"
ALJB602412-X	60"x24"x12"

DRY STORAGE SHELF

- 18GA Type 400 Stainless Steel Shelves With #4 Polish
- 1-1/2" Stallion Edge On All Sides Of Shelf
- For General Purpose Dry Storage Or In Refrigerators And Freezers
- Solid Surface Shelf For Easy Of Cleaning Up Spills
- Adjustable Bullet Feet
- Optional 5" Locking Casters
- Shipped Knocked Down, Easy To Assemble



SUS-244272-4-X



STALLION EDGE

18" WIDTH

MODEL	OVERALL SIZE (L X W X H)	# OF SHELVES
SUS-183036-2-X	30"x18"x36"	2
SUS-184236-2-X	42"x18"x36"	2
SUS-185436-2-X	54"x18"x36"	2
SUS-183060-3-X	30"x18"x60"	3
SUS-184260-3-X	42"x18"x60"	3
SUS-185460-3-X	54"x18"x60"	3
SUS-183072-4-X	30"x18"x72"	4
SUS-184272-4-X	42"x18"x72"	4
SUS-185472-4-X	54"x18"x72"	4

24" WIDTH

MODEL	OVERALL SIZE (L X W X H)	# OF SHELVES
SUS-243036-2-X	30"x24"x36"	2
SUS-244236-2-X	42"x24"x36"	2
SUS-245436-2-X	54"x24"x36"	2
SUS-243060-3-X	30"x24"x60"	3
SUS-244260-3-X	42"x24"x60"	3
SUS-245460-3-X	54"x24"x60"	3
SUS-243072-4-X	30"x24"x72"	4
SUS-244272-4-X	42"x24"x72"	4
SUS-245472-4-X	54"x24"x72"	4

MOBILE PAN RACKS (FRONT & SIDE LOAD)

- 6063 Aluminum Constructions
- 1" Square Tube Frame With Bolted Cross Bracing
- 3" Pan Spacing/20 Pan Capacity
- 5" Non-Locking Casters



STANDARD MOBILE PAN RACK

MODEL	DESC.	L X W X H	WEIGHT CAPACITY
ABPR-1820-3KD-X	Front Load	26"x20-1/2"x69"	200 lbs Total/10 lbs Per Pan
ABPR-1820-PC-X	Clear Plastic Cover w/ Zippers (Front Load Only)	28"x23"x61"	-
ABPR-1820-3KDS-X	Side Load	29-1/2"x19-1/2"x69"	200 lbs Total/10 lbs Per Pan

ROUNDED TOP MOBILE PAN RACK

MODEL	DESC.	L X W X H	WEIGHT CAPACITY
ABPR-1820-RKD-X	Front Load	26"x20-1/2"x69"	200 lbs Total/10 lbs Per Pan
ABPR-1820-RKDS-X	Side Load	29-1/2"x19-1/2"x69-3/4"	200 lbs Total/10 lbs Per Pan

NESTING MOBILE PAN RACK (SET-UP)

MODEL	DESC.	L X W X H	WEIGHT CAPACITY
ABPR-1820-ZN-X	Front Load	26"x20-1/2"x69"	300 lbs Total/15 lbs Per Pan
ABPR-1820-ZNS-X	Side Load	29-1/2"x19-1/2"x71"	300 lbs Total/15 lbs Per Pan

SHEET PAN DOLLIES

- Aluminum Construction
- 5" Plate Casters
- Push Handle
- Fits 26"x18" Sheet Pans
- Sheet Pans Not Included

MODEL	INNER (L X W)	OVERALL SIZE (L X W X H)
D1927-SP-H-X	27"x19-1/2"	28"x21-1/2"x31-5/16"



METAL TABLE BASES

FWFSF1022



STB-2230



STB-2242

ASSEMBLY VIDEO ONLINE AT
[YOUTUBE.COM/JOHNBOOSCO](https://www.youtube.com/JohnBoosCo)

STAINLESS STEEL TABLE BASES

- Square Stainless Steel Table Base With 3" Round Column
- 17-1/2" Cast Iron Top Plate Spider
- Adjustable Leveling Feet
- Brushed Stainless Steel Finish
- Dining Height Table Bases Stand 28-1/4" To The Top Of The Spider
- Bar Height Table Bases Stand 40-1/4" To The Top Of The Spider

MODEL	OVERALL HEIGHT	BASE SPREAD	SPIDER SIZE
STB-2230-X	28-1/4"	21-1/4"x21-1/4"	17-1/2"
STB-2242-X	40-1/4"	21-1/4"x21-1/4"	17-1/2"

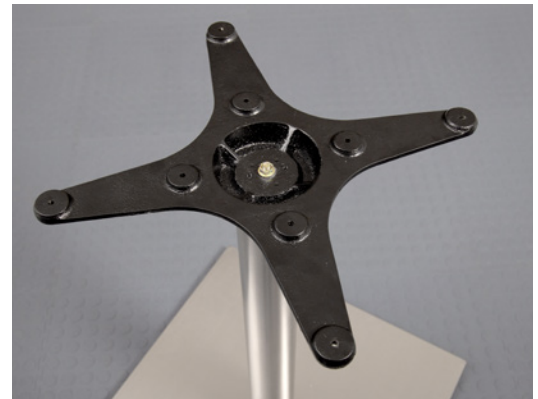


TABLE SPIDER

REQUIRED # OF BASES PER TOP SIZE GUIDE

RECTANGULAR

24" WIDTH	# OF BASES REQUIRED	30" WIDTH	# OF BASES REQUIRED	36" WIDTH	# OF BASES REQUIRED	42" WIDTH	# OF BASES REQUIRED
24"x24"	1	-	-	-	-	-	-
30"x24"	1	30"x30"	1	-	-	-	-
36"x24"	1	36"x30"	1	36"x36"	1	-	-
42"x24"	1	42"x30"	1	42"x36"	1	42"x42"	2
48"x24"	1	48"x30"	1	48"x36"	2	-	-
60"x24"	2	60"x30"	2	60"x36"	2	-	-
72"x24"	2	72"x30"	2	72"x36"	2	-	-
84"x24"	2	84"x30"	2	84"x36"	2	-	-
96"x24"	2	96"x30"	2	96"x36"	2	-	-

ROUND

ROUND TOP SIZE	QTY OF BASES
24" DIA.	1
30" DIA.	1
36" DIA.	1
42" DIA.	1

ORDERING TERMS

- No modifications, additions, or deletions to orders prior to 72-hour tentative ship date confirmation.
- Flyer pricing and products subject to change without notice.
- Charges to orders with **custom** products combined with standard flyer items are subject to a 14 day or more notification.
- Orders less than \$5,500.00 net do not qualify for free freight.
- Orders less than \$5,500.00 net that have been processed, may not have additions made to that same purchase order or combine a new purchase order in an effort to qualify for free freight.

CAUTION: FREIGHT CLAIMS

Before accepting any shipment, examine it carefully and note any damage or shortage on the Freight Bill before signing for delivery. All claims for shortage or damage must be filed with the carrier. Title passes from John Boos & Co. to the purchaser at point of origin of shipment. If, after receipt of shipment, concealed damage is discovered, immediately notify the delivering carrier requesting immediate inspection. The inspection report should be used to support your claims against the carrier.

RETURN SHIPMENTS

We will not accept any returned merchandise unless written authorization has been issued. Any claims for defective materials or workmanship should be mailed to the factory.

For return of UNUSED merchandise in A-1 condition - there is a 25% or greater restocking charge for AUTHORIZED returns. John Boos & Co. reserves the right to deny returned merchandise.

WARRANTY

The only warranty, expressed or implied, is a 1-year guarantee against defect in workmanship and material.

This warranty does not apply to damages which may result from neglect, accidental or intentional damage, normal wear and tear, misuse of product, unauthorized repair, exposure to extremes in temperature and humidity, and alteration or abuse of the product. Wood products ordered "unfinished" do not come with a warranty. Routine maintenance required. Periodically re-oil butcher block tops and wood cutting boards to preserve their longevity, beauty and durability. Care and maintenance products found on page 45.

Factory obligation under this warranty, is limited, at the option of John Boos & Co. to repair or replacement of the product (or one of equal type and quality if the product is no longer available), within 90 days after the receipt of written recommendation from the dealer, provided none of the above exceptions are evident.

John Boos & Co. shall not be liable for any loss or damage arising from use, or for consequential damages. This warranty gives certain legal rights and there may be other rights that vary from state to state.

FREIGHT PROGRAM

- Free Freight for mixed stainless steel flyer items on order of \$5,500.00 net or more. Shipments Continental U.S.A. only.
- Wire Shelving Freight Program:
 - Free freight for wire shelving orders of \$3,500 net or more. Shipments Continental U.S.A. only
 - Wire shelving will ride free with mixed flyer stainless steel on orders of \$5,500 net or more.
- 24 hours for concealed damage - retain original package.
- Price F.O.B. Factory.
- Product subject to item availability.
- 2-3 week lead time for fabricated product not in inventory on standard work tables and dish tables (E-Series not included).
- Flyer pricing and products subject to change without notice.
- No modifications to flyer product.
- All Prices Dealer Net.
- John Boos & Co. Will Not Be Responsible For Additional Accessorial Rates and Freight Charges. Any Additional Charges Will Be Covered By Customer

"-X" MODEL NUMBERS ARE FOR THE FOODSERVICE FLYER ONLY AND DOES NOT AFFECT NSF LISTING. "-X" ON THE END OF THE MODEL # DENOTES FLYER PRICED ITEMS ONLY





**3601 S. BANKER ST.
EFFINGHAM, IL 62401
JOHNBOOS.COM
PH: 888-431-2667 FAX: 800-433-2667
CHANGE SERVICE REQUESTED**



NEW PRODUCTS

UNDERBAR MOBILE ICE CHEST

- 1/2" Thick Insulated 18GA 300 Series Stainless Steel Ice Bin
- Stainless Steel Legs & Bracing
- 1/2" Center Drain
- Includes 18GA 300 Series Stainless Steel Lid
- 5" Locking Casters

MODEL	SIZE (LXW)	ICE CAPACITY	
UBBB-2448-X	48"x24"	296 LBS	
UBBB-2460-X	60"x24"	373 LBS	



1/2" CENTER DRAIN



5" LOCKING CASTERS

RESERVES THE RIGHT TO UPDATE PRICES AS DEEMED NECESSARY